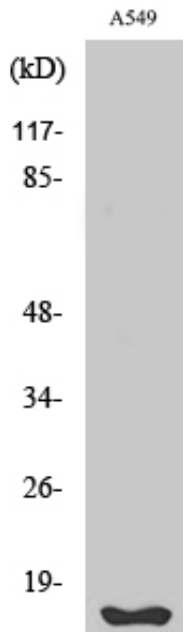


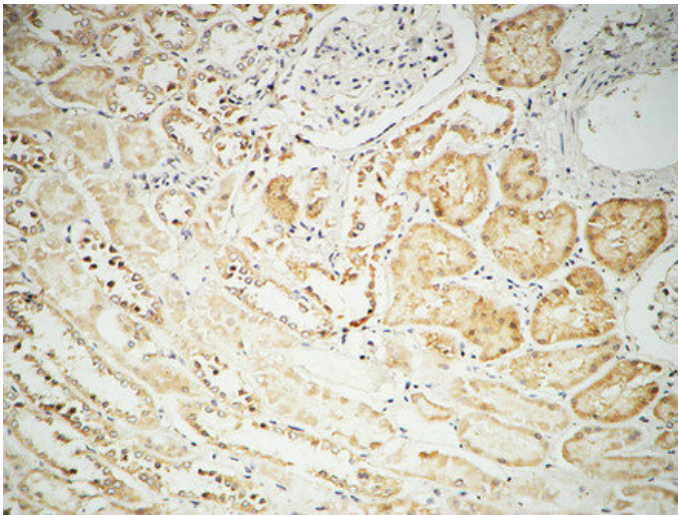
## Fhit Polyclonal Antibody

Catalog_no :	AT1704
Applications :	WB,IHC-p,IF,ELISA
Reactivity :	Human
Category :	抗原抗体
Size :	100µg/50µg/20µg
Gene_name :	FHIT
Protein_name :	Bis(5'-adenosyl)-triphosphatase
Humangene_id :	<a href="#">2272</a>
Humanswissprot_no :	<a href="#">P49789</a>
Immunogen :	The antiserum was produced against synthesized peptide derived from human FHIT. AA range:81-130
Specificity :	Fhit Polyclonal Antibody detects endogenous levels of Fhit protein.
Formulation :	Liquid in PBS containing 50% glycerol, 0.5% BSA and 0.02% sodium azide.
Source :	Rabbit
Dilution :	Western Blot: 1/500 - 1/2000. Immunohistochemistry: 1/100 - 1/300. Immunofluorescence: 1/200 - 1/1000. ELISA: 1/10000. Not yet tested in other applications.
Purification :	The antibody was affinity-purified from rabbit antiserum by affinity-chromatography using epitope-specific immunogen.
Concentration :	1 mg/ml
Storage_stability :	-20°C/1 year
Msds :	MSDS_Antibody.pdf
Other_name :	FHIT; Bis(5'-adenosyl)-triphosphatase; AP3A hydrolase; AP3Aase; Diadenosine 5'; 5'''-P1,P3-triphosphate hydrolase; Dinucleosidetriphosphatase; Fragile histidine triad protein
Molecular Weight :	16KD

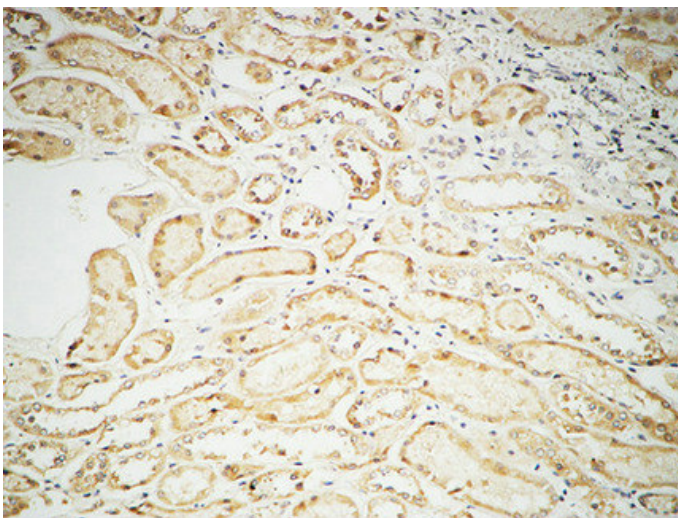
## Product Images



Western Blot analysis of various cells using Fhit Polyclonal Antibody

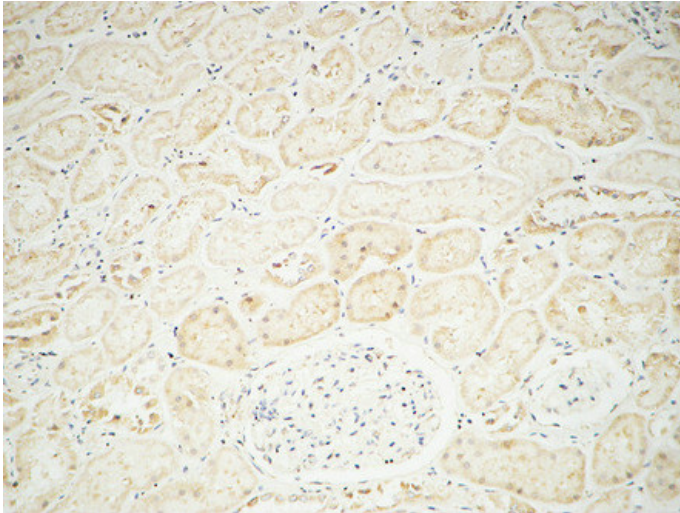


Immunohistochemical analysis of paraffin-embedded Human kidney. 1, Antibody was diluted at 1:100(4°, overnight). 2, High-pressure and temperature EDTA, pH8.0 was used for antigen retrieval. 3, Secondary antibody was diluted at 1:200(room temperature, 30min).



Immunohistochemical analysis of paraffin-embedded Human kidney. 1, Antibody was diluted at 1:100(4°, overnight). 2, High-pressure and temperature EDTA, pH8.0 was used for antigen retrieval. 3, Secondary antibody was diluted at 1:200(room temperature, 30min).

Immunohistochemical analysis of paraffin-embedded Human kidney. 1, Antibody was diluted at



1:100(4°,overnight). 2, High-pressure and temperature EDTA, pH8.0 was used for antigen retrieval. 3,Secondary antibody was diluted at 1:200(room temperature, 30min).