

Fibulin-3 Polyclonal Antibody

| | |
|---------------------|---|
| Catalog_no : | <u>AT1708</u> |
| Applications : | <u>WB,IHC-p,ELISA</u> |
| Reactivity : | <u>Human,Mouse,Rat</u> |
| Category : | <u>抗原抗体</u> |
| Size : | <u>100µg/50µg/20µg</u> |
| Gene_name : | <u>EFEMP1</u> |
| Protein_name : | <u>EGF-containing fibulin-like extracellular matrix protein 1</u> |
| Humangene_id : | <u>2202</u> |
| Humanswissprot_no : | <u>Q12805</u> |
| Mousegene_id : | <u>216616</u> |
| Mouseswissprot_no : | <u>Q8BPB5</u> |
| Ratswissprot_no : | <u>O35568</u> |
| Immunogen : | <u>The antiserum was produced against synthesized peptide derived from human EFEMP1. AA range:111-160</u> |
| Specificity : | <u>Fibulin-3 Polyclonal Antibody detects endogenous levels of Fibulin-3 protein.</u> |
| Formulation : | <u>Liquid in PBS containing 50% glycerol, 0.5% BSA and 0.02% sodium azide.</u> |
| Source : | <u>Rabbit</u> |
| Dilution : | <u>Western Blot: 1/500 - 1/2000. Immunohistochemistry: 1/100 - 1/300. ELISA: 1/10000. Not yet tested in other applications.</u> |
| Purification : | <u>The antibody was affinity-purified from rabbit antiserum by affinity-chromatography using epitope-specific immunogen.</u> |
| Concentration : | <u>1 mg/ml</u> |
| Storage_stability : | <u>-20°C/1 year</u> |
| Msds : | <u>MSDS_Antibody.pdf</u> |
| Other_name : | <u>EFEMP1; FBLN3; FBNL; EGF-containing fibulin-like extracellular matrix protein 1;</u> |

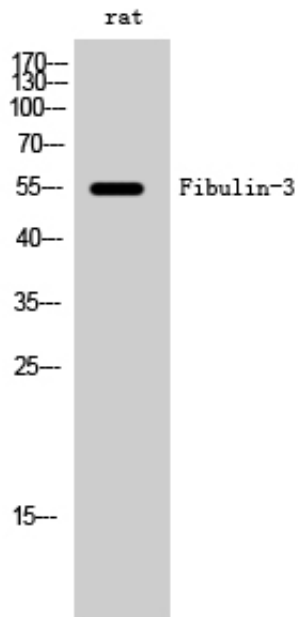


Extracellular protein S1-5; Fibrillin-like protein; Fibulin-3; FIBL-3

Molecular
Weight :

55KD

Product Images



Western Blot analysis of rat cells using Fibulin-3 Polyclonal Antibody