

## Fibulin-5 Polyclonal Antibody

Catalog_no :	AT1710
Applications :	WB,ELISA
Reactivity :	Human,Mouse,Rat
Category :	抗原抗体
Size :	100µg/50µg/20µg
Gene_name :	FBLN5
Protein_name :	Fibulin-5
Humangene_id	<a href="#">10516</a>
:	
Humanswissprot	<a href="#">Q9UBX5</a>
_no :	
Mousegene_id :	<a href="#">23876</a>
Mouseswissprot	<a href="#">Q9WVH9</a>
_no :	
Ratgene_id :	<a href="#">29158</a>
Ratswissprot_no	<a href="#">Q9WVH8</a>
:	
Immunogen :	The antiserum was produced against synthesized peptide derived from human FBLN5. AA range:171-220
Specificity :	Fibulin-5 Polyclonal Antibody detects endogenous levels of Fibulin-5 protein.
Formulation :	Liquid in PBS containing 50% glycerol, 0.5% BSA and 0.02% sodium azide.
Source :	Rabbit
Dilution :	Western Blot: 1/500 - 1/2000. ELISA: 1/5000. Not yet tested in other applications.
Purification :	The antibody was affinity-purified from rabbit antiserum by affinity-chromatography using epitope-specific immunogen.
Concentration :	1 mg/ml
Storage_stability	-20°C/1 year
:	
Msds :	<a href="#">MSDS_Antibody.pdf</a>



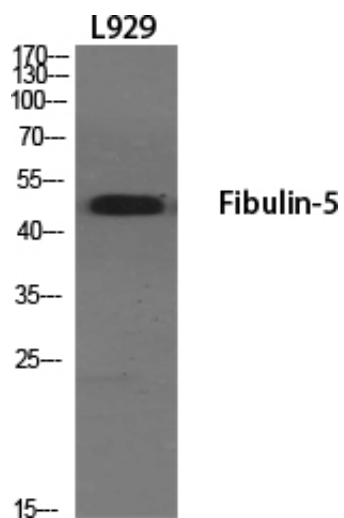
Other\_name : FBLN5; DANCE; Fibulin-5; FIBL-5; Developmental arteries and neural crest EGF-like protein; Dance; Urine p50 protein; UP50

---

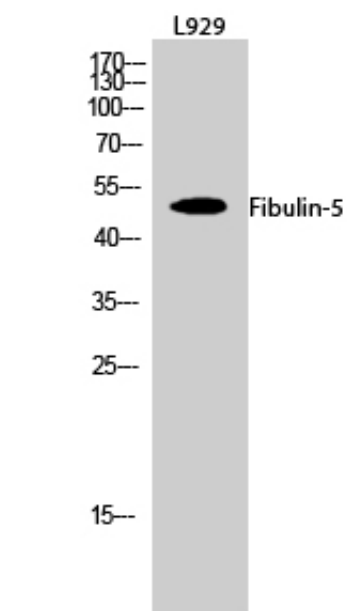
Molecular Weight : 50KD

---

## Product Images



Western Blot analysis of various cells using Fibulin-5 Polyclonal Antibody diluted at 1 : 1000



Western Blot analysis of L929 cells using Fibulin-5 Polyclonal Antibody diluted at 1 : 1000