

FIR Polyclonal Antibody

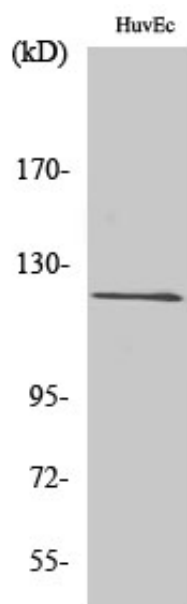
Catalog_no :	AT1712
Applications :	WB,IF,ELISA
Reactivity :	Human,Mouse
Category :	抗原抗体
Size :	100µg/50µg/20µg
Gene_name :	FARP2
Protein_name :	FERM RhoGEF and pleckstrin domain-containing protein 2
Humangene_id :	9855
Humanswissprot_no :	O94887
Mousegene_id :	227377
Mouseswissprot_no :	Q91VS8
Immunogen :	The antiserum was produced against synthesized peptide derived from human FIR. AA range:331-380
Specificity :	FIR Polyclonal Antibody detects endogenous levels of FIR protein.
Formulation :	Liquid in PBS containing 50% glycerol, 0.5% BSA and 0.02% sodium azide.
Source :	Rabbit
Dilution :	Western Blot: 1/500 - 1/2000. Immunofluorescence: 1/200 - 1/1000. ELISA: 1/20000. Not yet tested in other applications.
Purification :	The antibody was affinity-purified from rabbit antiserum by affinity-chromatography using epitope-specific immunogen.
Concentration :	1 mg/ml
Storage_stability :	-20°C/1 year
Msds :	MSDS_Antibody.pdf
Other_name :	FARP2; KIAA0793; PLEKHC3; FERM; RhoGEF and pleckstrin domain-containing protein 2; FERM domain including RhoGEF; FIR; Pleckstrin homology domain-containing family C member 3; PH domain-containing family C member 3



Molecular
Weight :

119KD

Product Images



Western Blot analysis of various cells using FIR Polyclonal Antibody