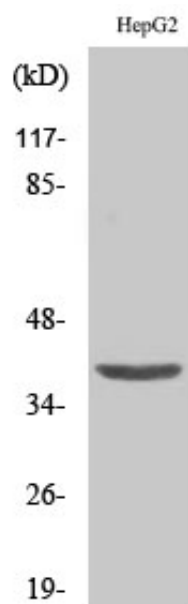




Fliz1 Polyclonal Antibody

Catalog_no :	AT1721
Applications :	WB,IHC-p,ELISA
Reactivity :	Human
Category :	抗原抗体
Size :	100µg/50µg/20µg
Gene_name :	ZC3H8
Protein_name :	Zinc finger CCCH domain-containing protein 8
Humangene_id :	84524
Humanswissprot_no :	Q8N5P1
Immunogen :	The antiserum was produced against synthesized peptide derived from human ZC3H8. AA range:81-130
Specificity :	Fliz1 Polyclonal Antibody detects endogenous levels of Fliz1 protein.
Formulation :	Liquid in PBS containing 50% glycerol, 0.5% BSA and 0.02% sodium azide.
Source :	Rabbit
Dilution :	Western Blot: 1/500 - 1/2000. Immunohistochemistry: 1/100 - 1/300. ELISA: 1/40000. Not yet tested in other applications.
Purification :	The antibody was affinity-purified from rabbit antiserum by affinity-chromatography using epitope-specific immunogen.
Concentration :	1 mg/ml
Storage_stability :	-20°C/1 year
Msds :	MSDS_Antibody.pdf
Other_name :	ZC3H8; ZC3HDC8; Zinc finger CCCH domain-containing protein 8
Molecular Weight :	40KD

Product Images



Western Blot analysis of various cells using Fliz1 Polyclonal Antibody cells nucleus extracted by Minute TM Cytoplasmic and Nuclear Fractionation kit (SC-003, Inventbiotech, MN, USA).