

Flotillin-2 Polyclonal Antibody

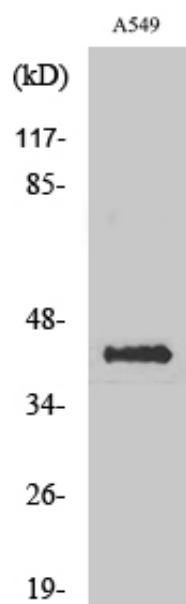
Catalog_no :	<u>AT1727</u>
Applications :	<u>WB,ELISA</u>
Reactivity :	<u>Human,Mouse,Rat</u>
Category :	<u>抗原抗体</u>
Size :	<u>100µg/50µg/20µg</u>
Gene_name :	<u>FLOT2</u>
Protein_name :	<u>Flotillin-2</u>
Humangene_id :	<u>2319</u>
Humanswissprot_no :	<u>Q14254</u>
Mousegene_id :	<u>14252</u>
Mouseswissprot_no :	<u>Q60634</u>
Ratgene_id :	<u>83764</u>
Ratswissprot_no :	<u>Q9Z2S9</u>
Immunogen :	<u>The antiserum was produced against synthesized peptide derived from human Flotillin-2. AA range:95-144</u>
Specificity :	<u>Flotillin-2 Polyclonal Antibody detects endogenous levels of Flotillin-2 protein.</u>
Formulation :	<u>Liquid in PBS containing 50% glycerol, 0.5% BSA and 0.02% sodium azide.</u>
Source :	<u>Rabbit</u>
Dilution :	<u>Western Blot: 1/500 - 1/2000. ELISA: 1/10000. Not yet tested in other applications.</u>
Purification :	<u>The antibody was affinity-purified from rabbit antiserum by affinity-chromatography using epitope-specific immunogen.</u>
Concentration :	<u>1 mg/ml</u>
Storage_stability :	<u>-20°C/1 year</u>
Msds :	<u>MSDS_Antibody.pdf</u>



Other_name : FLOT2; ESA1; M17S1; Flotillin-2; Epidermal surface antigen; ESA; Membrane component chromosome 17 surface marker 1

Molecular Weight : 46KD

Product Images



Western Blot analysis of various cells using Flotillin-2 Polyclonal Antibody