

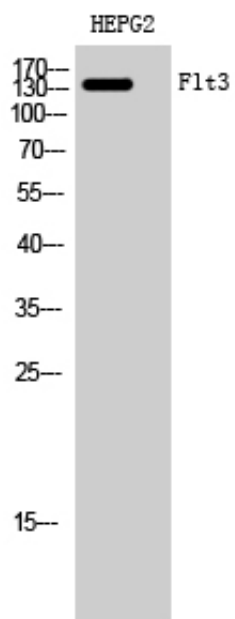
Flt3 Polyclonal Antibody

Catalog_no :	<u>AT1730</u>
Applications :	<u>WB,ELISA</u>
Reactivity :	<u>Human,Mouse</u>
Category :	<u>抗原抗体</u>
Size :	<u>100µg/50µg/20µg</u>
Gene_name :	<u>FLT3</u>
Protein_name :	<u>Receptor-type tyrosine-protein kinase FLT3</u>
Humangene_id :	<u>2322</u>
Humanswissprot_no :	<u>P36888</u>
Mousegene_id :	<u>14255</u>
Mouseswissprot_no :	<u>Q00342</u>
Immunogen :	<u>The antiserum was produced against synthesized peptide derived from human FLT3. AA range:565-614</u>
Specificity :	<u>Flt3 Polyclonal Antibody detects endogenous levels of Flt3 protein.</u>
Formulation :	<u>Liquid in PBS containing 50% glycerol, 0.5% BSA and 0.02% sodium azide.</u>
Source :	<u>Rabbit</u>
Dilution :	<u>Western Blot: 1/500 - 1/2000. ELISA: 1/20000. Not yet tested in other applications.</u>
Purification :	<u>The antibody was affinity-purified from rabbit antiserum by affinity-chromatography using epitope-specific immunogen.</u>
Concentration :	<u>1 mg/ml</u>
Storage_stability :	<u>-20°C/1 year</u>
Msds :	<u>MSDS_Antibody.pdf</u>
Other_name :	<u>FLT3; CD135; FLK2; STK1; Receptor-type tyrosine-protein kinase FLT3; FL cytokine receptor; Fetal liver kinase-2; FLK-2; Fms-like tyrosine kinase 3; FLT-3; Stem cell tyrosine kinase 1; STK-1; CD antigen CD135</u>
Molecular	<u>117KD</u>



Weight :

Product Images



Western Blot analysis of HEPG2 cells using Flt3 Polyclonal Antibody diluted at 1 : 1000