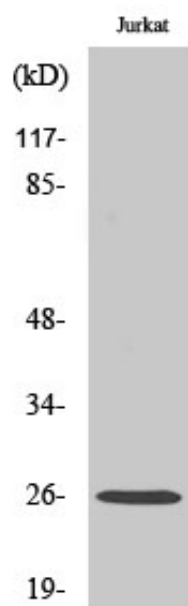




## Flt3-L Polyclonal Antibody

Catalog_no :	AT1731
Applications :	WB,IHC-p,ELISA
Reactivity :	Human
Category :	抗原抗体
Size :	100µg/50µg/20µg
Gene_name :	FLT3LG
Protein_name :	Fms-related tyrosine kinase 3 ligand
Humangene_id :	<a href="#">2323</a>
Humanswissprot_no :	<a href="#">P49771</a>
Immunogen :	The antiserum was produced against synthesized peptide derived from human Flt3 ligand. AA range:171-220
Specificity :	Flt3-L Polyclonal Antibody detects endogenous levels of Flt3-L protein.
Formulation :	Liquid in PBS containing 50% glycerol, 0.5% BSA and 0.02% sodium azide.
Source :	Rabbit
Dilution :	Western Blot: 1/500 - 1/2000. Immunohistochemistry: 1/100 - 1/300. ELISA: 1/20000. Not yet tested in other applications.
Purification :	The antibody was affinity-purified from rabbit antiserum by affinity-chromatography using epitope-specific immunogen.
Concentration :	1 mg/ml
Storage_stability :	-20°C/1 year
Msds :	MSDS_Antibody.pdf
Other_name :	FLT3LG; Fms-related tyrosine kinase 3 ligand; Flt3 ligand; Flt3L; SL cytokine
Molecular Weight :	26KD

## Product Images



Western Blot analysis of various cells using Flt3-L Polyclonal Antibody