

FOP Polyclonal Antibody

Catalog_no :	AT1736
Applications :	WB,IHC-p,IF,ELISA
Reactivity :	Human,Mouse,Rat
Category :	抗原抗体
Size :	100µg/50µg/20µg
Gene_name :	FGFR1OP
Protein_name :	FGFR1 oncogene partner
Humangene_id	11116
:	
Humanswissprot	O95684
_no :	
Mousegene_id :	75296
Mouseswissprot	Q66JX5
_no :	
Ratgene_id :	683722
Ratswissprot_no	Q4V7C1
:	
Immunogen :	The antiserum was produced against synthesized peptide derived from human FGFR1 Oncogene Partner. AA range:341-390
Specificity :	FOP Polyclonal Antibody detects endogenous levels of FOP protein.
Formulation :	Liquid in PBS containing 50% glycerol, 0.5% BSA and 0.02% sodium azide.
Source :	Rabbit
Dilution :	Western Blot: 1/500 - 1/2000. Immunohistochemistry: 1/100 - 1/300. Immunofluorescence: 1/200 - 1/1000. ELISA: 1/10000. Not yet tested in other applications.
Purification :	The antibody was affinity-purified from rabbit antiserum by affinity-chromatography using epitope-specific immunogen.
Concentration :	1 mg/ml
Storage_stability	-20°C/1 year
:	

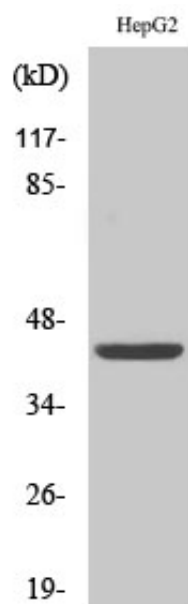


Msd : MSDS_Antibody.pdf

Other_name : FGFR1OP; FOP; FGFR1 oncogene partner

Molecular Weight : 43KD

Product Images



Western Blot analysis of various cells using FOP Polyclonal Antibody