

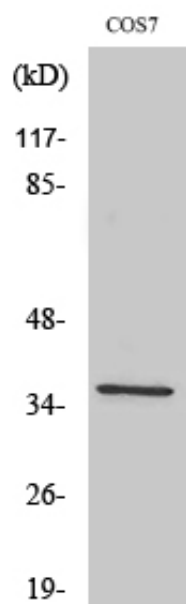
Fos B Polyclonal Antibody

Catalog_no :	AT1738
Applications :	WB,IHC-p,IF,ELISA
Reactivity :	Human,Mouse,Monkey
Category :	抗原抗体
Size :	100µg/50µg/20µg
Gene_name :	FOSB
Protein_name :	Protein fosB
Humangene_id :	2354
Humanswissprot_no :	P53539
Mousegene_id :	14282
Mouseswissprot_no :	P13346
Immunogen :	The antiserum was produced against synthesized peptide derived from human FosB. AA range:12-61
Specificity :	Fos B Polyclonal Antibody detects endogenous levels of Fos B protein.
Formulation :	Liquid in PBS containing 50% glycerol, 0.5% BSA and 0.02% sodium azide.
Source :	Rabbit
Dilution :	Western Blot: 1/500 - 1/2000. Immunohistochemistry: 1/100 - 1/300. Immunofluorescence: 1/200 - 1/1000. ELISA: 1/20000. Not yet tested in other applications.
Purification :	The antibody was affinity-purified from rabbit antiserum by affinity-chromatography using epitope-specific immunogen.
Concentration :	1 mg/ml
Storage_stability :	-20°C/1 year
Msds :	MSDS_Antibody.pdf
Other_name :	FOSB; G0S3; Protein fosB; G0/G1 switch regulatory protein 3
Molecular	35KD



Weight :

Product Images



Western Blot analysis of various cells using Fos B Polyclonal Antibody cells nucleus extracted by Minute TM Cytoplasmic and Nuclear Fractionation kit (SC-003, Inventbiotech, MN, USA).