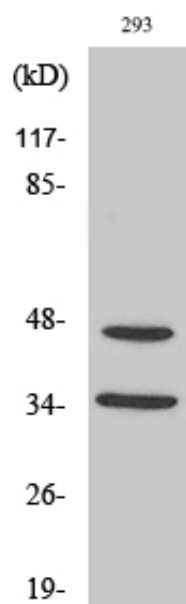


## FoxB1/2 Polyclonal Antibody

Catalog_no :	AT1740
Applications :	WB,IHC-p,ELISA
Reactivity :	Human,Mouse
Category :	抗原抗体
Size :	100µg/50µg/20µg
Gene_name :	FOXB1/FOXB2
Protein_name :	Forkhead box protein B1/2
Humangene_id :	<a href="#">27023/442425</a>
Humanswissprot_no :	<a href="#">Q99853/Q5VYV0</a>
Mousegene_id :	<a href="#">64290/14240</a>
Immunogen :	The antiserum was produced against synthesized peptide derived from human FOXB1/2. AA range:51-100
Specificity :	FoxB1/2 Polyclonal Antibody detects endogenous levels of FoxB1/2 protein.
Formulation :	Liquid in PBS containing 50% glycerol, 0.5% BSA and 0.02% sodium azide.
Source :	Rabbit
Dilution :	Western Blot: 1/500 - 1/2000. Immunohistochemistry: 1/100 - 1/300. ELISA: 1/20000. Not yet tested in other applications.
Purification :	The antibody was affinity-purified from rabbit antiserum by affinity-chromatography using epitope-specific immunogen.
Concentration :	1 mg/ml
Storage_stability :	-20°C/1 year
Msds :	MSDS_Antibody.pdf
Other_name :	FOXB1; FKH5; Forkhead box protein B1; Transcription factor FKH-5; FOXB2; Forkhead box protein B2
Molecular Weight :	45KD

## Product Images



Western Blot analysis of various cells using FoxB1/2 Polyclonal Antibody cells nucleus extracted by Minute TM Cytoplasmic and Nuclear Fractionation kit (SC-003, Inventbiotech, MN, USA).