

## FoxC1/2 Polyclonal Antibody

Catalog_no :	AT1742
Applications :	WB,IHC-p,IF,ELISA
Reactivity :	Human,Mouse,Rat
Category :	抗原抗体
Size :	100µg/50µg/20µg
Gene_name :	FOXC1/FOXC2
Protein_name :	Forkhead box protein C1/2
Humangene_id :	<a href="#">2296/2303</a>
Humanswissprot_no :	<a href="#">Q12948/Q99958</a>
Mousegene_id :	<a href="#">17300/14234</a>
Ratswissprot_no :	<a href="#">Q63246</a>
Immunogen :	The antiserum was produced against synthesized peptide derived from human FOXC1/2. AA range:151-200
Specificity :	FoxC1/2 Polyclonal Antibody detects endogenous levels of FoxC1/2 protein.
Formulation :	Liquid in PBS containing 50% glycerol, 0.5% BSA and 0.02% sodium azide.
Source :	Rabbit
Dilution :	Western Blot: 1/500 - 1/2000. Immunohistochemistry: 1/100 - 1/300. Immunofluorescence: 1/200 - 1/1000. ELISA: 1/40000. Not yet tested in other applications.
Purification :	The antibody was affinity-purified from rabbit antiserum by affinity-chromatography using epitope-specific immunogen.
Concentration :	1 mg/ml
Storage_stability :	-20°C/1 year
Msds :	MSDS_Antibody.pdf
Other_name :	FOXC1; FKHL7; FREAC3; Forkhead box protein C1; Forkhead-related protein FKHL7; Forkhead-related transcription factor 3; FREAC-3; FOXC2; FKHL14; MFH1; Forkhead box protein C2; Forkhead-related protein FKHL14; Mesenchyme fork head protein 1;

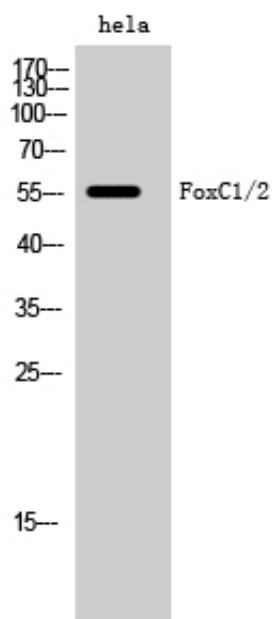


Molecular  
Weight :

57KD

---

## Product Images



Western Blot analysis of hela cells using FoxC1/2 Polyclonal Antibody diluted at 1 : 2000 cells nucleus extracted by Minute TM Cytoplasmic and Nuclear Fractionation kit (SC-003, Invent biotech, MN, USA).