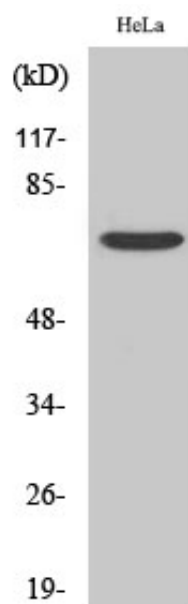




## Frizzled-1 Polyclonal Antibody

Catalog_no :	<u>AT1773</u>
Applications :	<u>WB,IF,ELISA</u>
Reactivity :	<u>Human</u>
Category :	<u>抗原抗体</u>
Size :	<u>100µg/50µg/20µg</u>
Gene_name :	<u>FZD1</u>
Protein_name :	<u>Frizzled-1</u>
Humangene_id :	<u><a href="#">8321</a></u>
Humanswissprot_no :	<u><a href="#">Q9UP38</a></u>
Immunogen :	<u>The antiserum was produced against synthesized peptide derived from human FZD1. AA range:15-64</u>
Specificity :	<u>Frizzled-1 Polyclonal Antibody detects endogenous levels of Frizzled-1 protein.</u>
Formulation :	<u>Liquid in PBS containing 50% glycerol, 0.5% BSA and 0.02% sodium azide.</u>
Source :	<u>Rabbit</u>
Dilution :	<u>Western Blot: 1/500 - 1/2000. Immunofluorescence: 1/200 - 1/1000. ELISA: 1/5000. Not yet tested in other applications.</u>
Purification :	<u>The antibody was affinity-purified from rabbit antiserum by affinity-chromatography using epitope-specific immunogen.</u>
Concentration :	<u>1 mg/ml</u>
Storage_stability :	<u>-20°C/1 year</u>
Msds :	<u>MSDS_Antibody.pdf</u>
Other_name :	<u>FZD1; Frizzled-1; Fz-1; hFz1; FzE1</u>
Molecular Weight :	<u>71KD</u>

## Product Images



Western Blot analysis of various cells using Frizzled-1 Polyclonal Antibody