



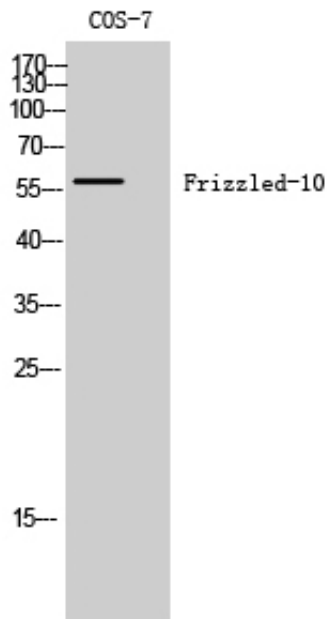
Frizzled-10 Polyclonal Antibody

Catalog_no :	AT1775
Applications :	WB,IHC-p,IF,ELISA
Reactivity :	Human,Mouse,Monkey
Category :	抗原抗体
Size :	100µg/50µg/20µg
Gene_name :	FZD10
Protein_name :	Frizzled-10
Humangene_id :	11211
Humanswissprot_no :	Q9ULW2
Mousegene_id :	93897
Mouseswissprot_no :	Q8BKG4
Immunogen :	The antiserum was produced against synthesized peptide derived from human FZD10. AA range:135-184
Specificity :	Frizzled-10 Polyclonal Antibody detects endogenous levels of Frizzled-10 protein.
Formulation :	Liquid in PBS containing 50% glycerol, 0.5% BSA and 0.02% sodium azide.
Source :	Rabbit
Dilution :	Western Blot: 1/500 - 1/2000. Immunohistochemistry: 1/100 - 1/300. Immunofluorescence: 1/200 - 1/1000. ELISA: 1/5000. Not yet tested in other applications.
Purification :	The antibody was affinity-purified from rabbit antiserum by affinity-chromatography using epitope-specific immunogen.
Concentration :	1 mg/ml
Storage_stability :	-20°C/1 year
Msds :	MSDS_Antibody.pdf
Other_name :	FZD10; Frizzled-10; Fz-10; hFz10; FzE7; CD antigen CD350
Molecular	60KD



Weight :

Product Images



Western Blot analysis of COS-7 cells using Frizzled-10 Polyclonal Antibody