

## FRS2 Polyclonal Antibody

Catalog_no :	AT1791
Applications :	WB,ELISA
Reactivity :	Human,Mouse
Category :	抗原抗体
Size :	100µg/50µg/20µg
Gene_name :	FRS2
Protein_name :	Fibroblast growth factor receptor substrate 2
Humangene_id :	<a href="#">10818</a>
Humanswissprot_no :	<a href="#">Q8WU20</a>
Mousegene_id :	<a href="#">327826</a>
Mouseswissprot_no :	<a href="#">Q8C180</a>
Immunogen :	The antiserum was produced against synthesized peptide derived from human FRS2. AA range:162-211
Specificity :	FRS2 Polyclonal Antibody detects endogenous levels of FRS2 protein.
Formulation :	Liquid in PBS containing 50% glycerol, 0.5% BSA and 0.02% sodium azide.
Source :	Rabbit
Dilution :	Western Blot: 1/500 - 1/2000. ELISA: 1/40000. Not yet tested in other applications.
Purification :	The antibody was affinity-purified from rabbit antiserum by affinity-chromatography using epitope-specific immunogen.
Concentration :	1 mg/ml
Storage_stability :	-20°C/1 year
Msds :	<a href="#">MSDS_Antibody.pdf</a>
Other_name :	FRS2; Fibroblast growth factor receptor substrate 2; FGFR substrate 2; FGFR-signaling adaptor SNT; Suc1-associated neurotrophic factor target 1; SNT-1
Molecular Weight :	65KD



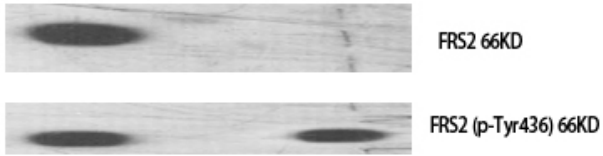
**专注二抗产品**

Biodragon旗下品牌

---

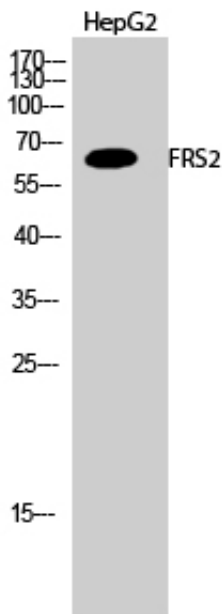
Product Images

Western Blot analysis of various cells using FRS2 Polyclonal Antibody diluted at 1 : 1000



-	+	- phospho-peptide
-	-	+ non-phospho-peptide
+	+	+ 3T3 NGF(customer's sample)

Western Blot analysis of HepG2 cells using FRS2 Polyclonal Antibody diluted at 1 : 1000



Western blot analysis of KB lysis using FRS2 antibody. Antibody was diluted at 1:1000

