



FRS2 Polyclonal Antibody

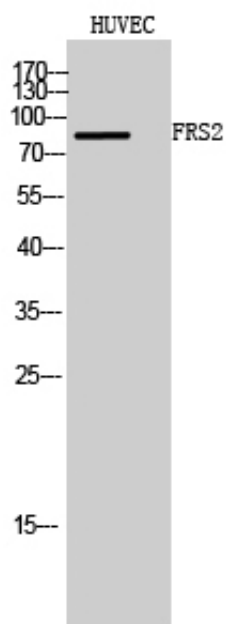
Catalog_no :	AT1792
Applications :	WB,ELISA
Reactivity :	Human,Mouse
Category :	抗原抗体
Size :	100µg/50µg/20µg
Gene_name :	FRS2
Protein_name :	Fibroblast growth factor receptor substrate 2
Humangene_id :	10818
Humanswissprot_no :	Q8WU20
Mousegene_id :	327826
Mouseswissprot_no :	Q8C180
Immunogen :	The antiserum was produced against synthesized peptide derived from human FRS2. AA range:402-451
Specificity :	FRS2 Polyclonal Antibody detects endogenous levels of FRS2 protein.
Formulation :	Liquid in PBS containing 50% glycerol, 0.5% BSA and 0.02% sodium azide.
Source :	Rabbit
Dilution :	Western Blot: 1/500 - 1/2000. ELISA: 1/5000. Not yet tested in other applications.
Purification :	The antibody was affinity-purified from rabbit antiserum by affinity-chromatography using epitope-specific immunogen.
Concentration :	1 mg/ml
Storage_stability :	-20°C/1 year
Msds :	MSDS_Antibody.pdf
Other_name :	FRS2; Fibroblast growth factor receptor substrate 2; FGFR substrate 2; FGFR-signaling adaptor SNT; Suc1-associated neurotrophic factor target 1; SNT-1
Molecular Weight :	85KD



专注二抗产品

Biodragon旗下品牌

Product Images



Western Blot analysis of HUVEC cells using FRS2 Polyclonal Antibody