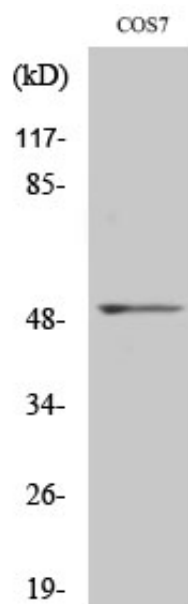




FRS3 Polyclonal Antibody

Catalog_no :	AT1793
Applications :	WB,ELISA
Reactivity :	Human,Monkey
Category :	抗原抗体
Size :	100µg/50µg/20µg
Gene_name :	FRS3
Protein_name :	Fibroblast growth factor receptor substrate 3
Humangene_id :	10817
Humanswissprot_no :	O43559
Immunogen :	The antiserum was produced against synthesized peptide derived from human FRS3. AA range:191-240
Specificity :	FRS3 Polyclonal Antibody detects endogenous levels of FRS3 protein.
Formulation :	Liquid in PBS containing 50% glycerol, 0.5% BSA and 0.02% sodium azide.
Source :	Rabbit
Dilution :	Western Blot: 1/500 - 1/2000. ELISA: 1/40000. Not yet tested in other applications.
Purification :	The antibody was affinity-purified from rabbit antiserum by affinity-chromatography using epitope-specific immunogen.
Concentration :	1 mg/ml
Storage_stability :	-20°C/1 year
Msds :	MSDS_Antibody.pdf
Other_name :	FRS3; Fibroblast growth factor receptor substrate 3; FGFR substrate 3; FGFR-signaling adaptor SNT2; Suc1-associated neurotrophic factor target 2; SNT-2
Molecular Weight :	54KD

Product Images



Western Blot analysis of various cells using FRS3 Polyclonal Antibody