

FSHR Polyclonal Antibody

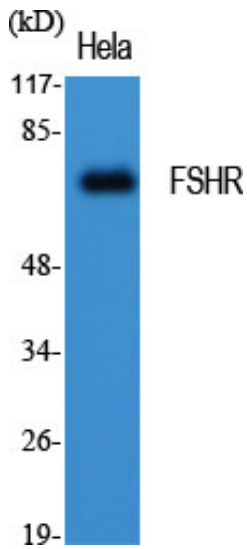
Catalog_no :	<u>AT1795</u>
Applications :	<u>WB,IHC-p,IF,ELISA</u>
Reactivity :	<u>Human,Mouse,Rat</u>
Category :	<u>抗原抗体</u>
Size :	<u>100µg/50µg/20µg</u>
Gene_name :	<u>FSHR</u>
Protein_name :	<u>Follicle-stimulating hormone receptor</u>
Humangene_id :	<u>2492</u>
Humanswissprot_no :	<u>P23945</u>
Mousegene_id :	<u>14309</u>
Mouseswissprot_no :	<u>P35378</u>
Ratgene_id :	<u>25449</u>
Ratswissprot_no :	<u>P20395</u>
Immunogen :	<u>The antiserum was produced against synthesized peptide derived from human FSHR. AA range:211-260</u>
Specificity :	<u>FSHR Polyclonal Antibody detects endogenous levels of FSHR protein.</u>
Formulation :	<u>Liquid in PBS containing 50% glycerol, 0.5% BSA and 0.02% sodium azide.</u>
Source :	<u>Rabbit</u>
Dilution :	<u>IHC-p: 100-300.Western Blot: 1/500 - 1/2000. Immunofluorescence: 1/200 - 1/1000. ELISA: 1/5000. Not yet tested in other applications.</u>
Purification :	<u>The antibody was affinity-purified from rabbit antiserum by affinity-chromatography using epitope-specific immunogen.</u>
Concentration :	<u>1 mg/ml</u>
Storage_stability :	<u>-20°C/1 year</u>
Msds :	<u>MSDS_Antibody.pdf</u>



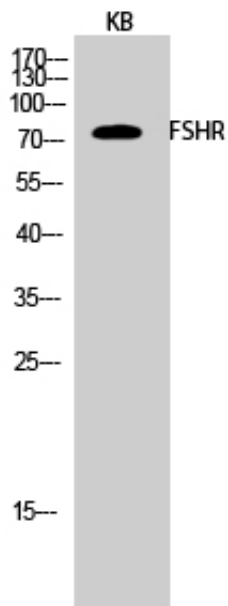
Other_name : FSHR; LGR1; Follicle-stimulating hormone receptor; FSH-R; Follitropin receptor

Molecular Weight : 70KD

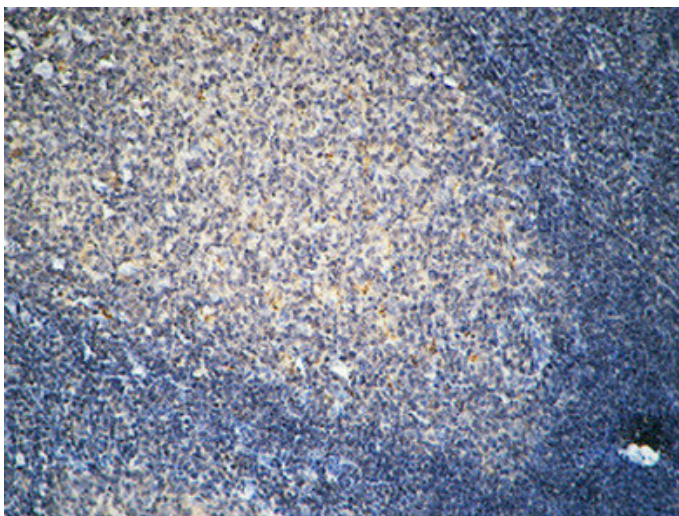
Product Images



Western Blot analysis of various cells using FSHR Polyclonal Antibody diluted at 1 : 1000

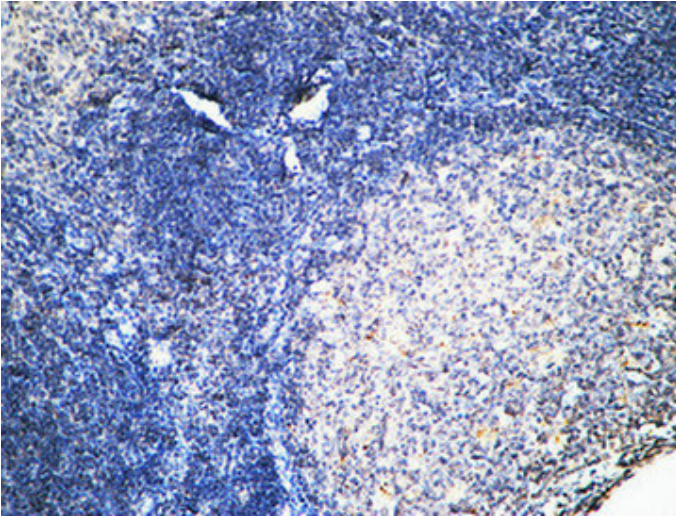


Western Blot analysis of KB cells using FSHR Polyclonal Antibody diluted at 1 : 1000

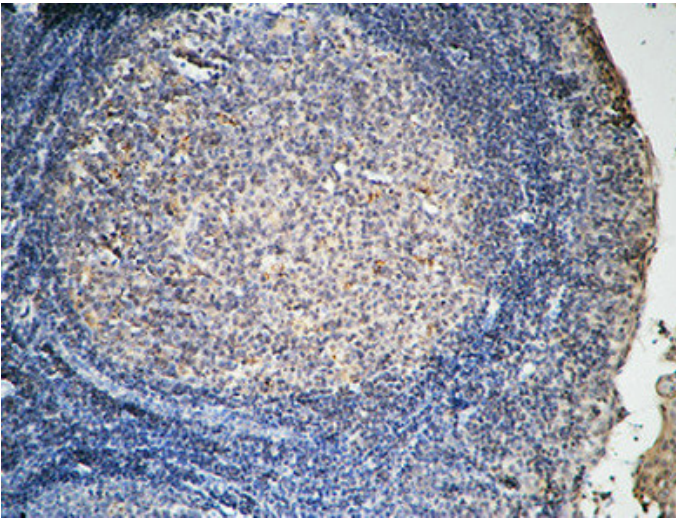


Immunohistochemical analysis of paraffin-embedded Human Amygdala. 1, Antibody was diluted at 1:100(4°, overnight). 2, High-pressure and temperature EDTA, pH8.0 was used for antigen retrieval. 3, Secondary antibody was diluted at 1:200(room temperature, 30min).

Immunohistochemical analysis of paraffin-embedded



Human Amygdala. 1, Antibody was diluted at 1:100(4°,overnight). 2, High-pressure and temperature EDTA, pH8.0 was used for antigen retrieval. 3,Secondary antibody was diluted at 1:200(room temperature, 30min).



Immunohistochemical analysis of paraffin-embedded Human Amygdala. 1, Antibody was diluted at 1:100(4°,overnight). 2, High-pressure and temperature EDTA, pH8.0 was used for antigen retrieval. 3,Secondary antibody was diluted at 1:200(room temperature, 30min).