

## Fusin Polyclonal Antibody

Catalog_no :	AT1800
Applications :	WB,IF,ELISA
Reactivity :	Human,Mouse,Rat
Category :	抗原抗体
Size :	100µg/50µg/20µg
Gene_name :	CXCR4
Protein_name :	C-X-C chemokine receptor type 4
Humangene_id :	<a href="#">7852</a>
Humanswissprot_no :	<a href="#">P61073</a>
Mousegene_id :	<a href="#">12767</a>
Mouseswissprot_no :	<a href="#">P70658</a>
Ratswissprot_no :	<a href="#">O08565</a>
Immunogen :	The antiserum was produced against synthesized peptide derived from human CXCR4. AA range:300-349
Specificity :	Fusin Polyclonal Antibody detects endogenous levels of Fusin protein.
Formulation :	Liquid in PBS containing 50% glycerol, 0.5% BSA and 0.02% sodium azide.
Source :	Rabbit
Dilution :	Western Blot: 1/500 - 1/2000. Immunofluorescence: 1/200 - 1/1000. ELISA: 1/40000. Not yet tested in other applications.
Purification :	The antibody was affinity-purified from rabbit antiserum by affinity-chromatography using epitope-specific immunogen.
Concentration :	1 mg/ml
Storage_stability :	-20°C/1 year
Msds :	<a href="#">MSDS_Antibody.pdf</a>
Other_name :	CXCR4; C-X-C chemokine receptor type 4; CXC-R4; CXCR-4; FB22; Fusin; HM89; LCR1;



Leukocyte-derived seven transmembrane domain receptor; LESTR; NPYRL; Stromal cell-derived factor 1 receptor; SDF-1 receptor; CD antigen CD184

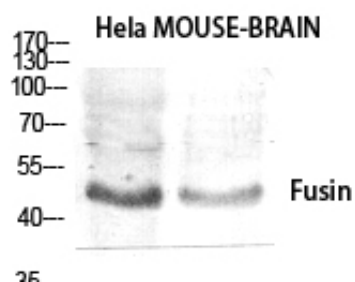
---

Molecular  
Weight :

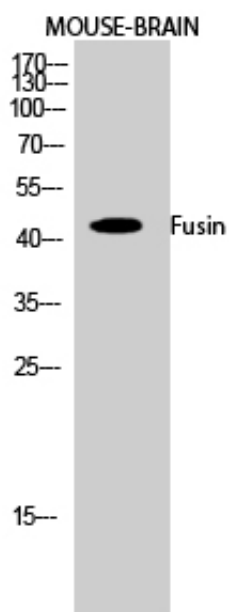
36KD

---

## Product Images



Western Blot analysis of various cells using Fusin Polyclonal Antibody diluted at 1 : 1000



Western Blot analysis of MOUSE-BRAIN cells using Fusin Polyclonal Antibody diluted at 1 : 1000