

Fyb Polyclonal Antibody

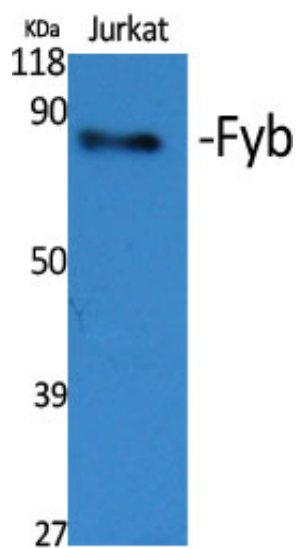
Catalog_no :	AT1804
Applications :	WB,ELISA
Reactivity :	Human,Mouse,Rat
Category :	抗原抗体
Size :	100µg/50µg/20µg
Gene_name :	FYB
Protein_name :	FYN-binding protein
Humangene_id :	2533
Humanswissprot_no :	O15117
Mousegene_id :	23880
Mouseswissprot_no :	O35601
Immunogen :	Synthesized peptide derived from Fyb . at AA range: 620-700
Specificity :	Fyb Polyclonal Antibody detects endogenous levels of Fyb protein.
Formulation :	Liquid in PBS containing 50% glycerol, 0.5% BSA and 0.02% sodium azide.
Source :	Rabbit
Dilution :	Western Blot: 1/500 - 1/2000. ELISA: 1/40000. Not yet tested in other applications.
Purification :	The antibody was affinity-purified from rabbit antiserum by affinity-chromatography using epitope-specific immunogen.
Concentration :	1 mg/ml
Storage_stability :	-20°C/1 year
Msds :	MSDS_Antibody.pdf
Other_name :	FYB; SLAP130; FYN-binding protein; Adhesion and degranulation promoting adaptor protein; ADAP; FYB-120/130; p120/p130; FYN-T-binding protein; SLAP-130; SLP-76-associated phosphoprotein
Molecular Weight :	85KD



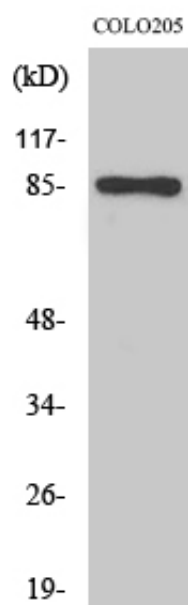
专注二抗产品

Biodragon旗下品牌

Product Images



Western Blot analysis of various cells using Fyb Polyclonal Antibody



Western Blot analysis of COLO205 cells using Fyb Polyclonal Antibody