

## Fyn Polyclonal Antibody

Catalog_no :	AT1806
Applications :	WB,IHC-p,ELISA
Reactivity :	Human,Mouse,Rat
Category :	抗原抗体
Size :	100µg/50µg/20µg
Gene_name :	FYN
Protein_name :	Tyrosine-protein kinase Fyn
Humangene_id :	<a href="#">2534</a>
Humanswissprot_no :	<a href="#">P06241</a>
Mousegene_id :	<a href="#">14360</a>
Mouseswissprot_no :	<a href="#">P39688</a>
Ratgene_id :	<a href="#">25150</a>
Ratswissprot_no :	<a href="#">Q62844</a>
Immunogen :	The antiserum was produced against synthesized peptide derived from human Fyn. AA range:488-537
Specificity :	Fyn Polyclonal Antibody detects endogenous levels of Fyn protein.
Formulation :	Liquid in PBS containing 50% glycerol, 0.5% BSA and 0.02% sodium azide.
Source :	Rabbit
Dilution :	Western Blot: 1/500 - 1/2000. ELISA: 1/5000. Not yet tested in other applications.
Purification :	The antibody was affinity-purified from rabbit antiserum by affinity-chromatography using epitope-specific immunogen.
Concentration :	1 mg/ml
Storage_stability :	-20°C/1 year
Msds :	<a href="#">MSDS_Antibody.pdf</a>



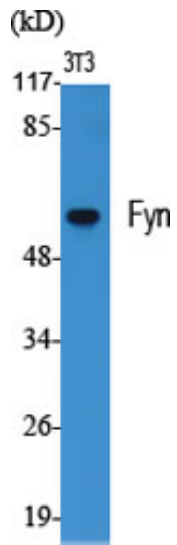
Other\_name : FYN; Tyrosine-protein kinase Fyn; Proto-oncogene Syn; Proto-oncogene c-Fyn; Src-like kinase; SLK; p59-Fyn

---

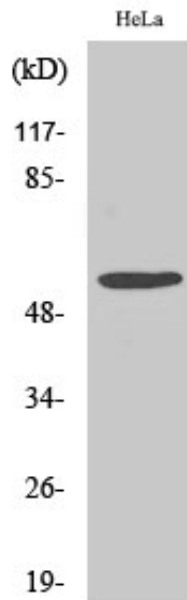
Molecular Weight : 60KD

---

## Product Images



Western Blot analysis of various cells using Fyn Polyclonal Antibody diluted at 1 : 2000



Western Blot analysis of COLO205 cells using Fyn Polyclonal Antibody diluted at 1 : 2000