

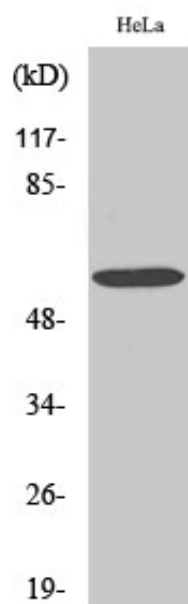
G3BP1 Polyclonal Antibody

Catalog_no :	<u>AT1808</u>
Applications :	<u>WB,IHC-p,ELISA</u>
Reactivity :	<u>Human,Mouse,Monkey</u>
Category :	<u>抗原抗体</u>
Size :	<u>100µg/50µg/20µg</u>
Gene_name :	<u>G3BP1</u>
Protein_name :	<u>Ras GTPase-activating protein-binding protein 1</u>
Humangene_id :	<u>10146</u>
Humanswissprot_no :	<u>Q13283</u>
Mousegene_id :	<u>27041</u>
Mouseswissprot_no :	<u>P97855</u>
Immunogen :	<u>The antiserum was produced against synthesized peptide derived from human G3BP-1. AA range:199-248</u>
Specificity :	<u>G3BP1 Polyclonal Antibody detects endogenous levels of G3BP1 protein.</u>
Formulation :	<u>Liquid in PBS containing 50% glycerol, 0.5% BSA and 0.02% sodium azide.</u>
Source :	<u>Rabbit</u>
Dilution :	<u>Western Blot: 1/500 - 1/2000. Immunohistochemistry: 1/100 - 1/300. ELISA: 1/10000. Not yet tested in other applications.</u>
Purification :	<u>The antibody was affinity-purified from rabbit antiserum by affinity-chromatography using epitope-specific immunogen.</u>
Concentration :	<u>1 mg/ml</u>
Storage_stability :	<u>-20°C/1 year</u>
Msds :	<u>MSDS_Antibody.pdf</u>
Other_name :	<u>G3BP1; G3BP; Ras GTPase-activating protein-binding protein 1; G3BP-1; ATP-dependent DNA helicase VIII; hDH VIII; GAP SH3 domain-binding protein 1</u>
Molecular	<u>52KD</u>



Weight :

Product Images



Western Blot analysis of various cells using G3BP1 Polyclonal Antibody