

G3BP2 Polyclonal Antibody

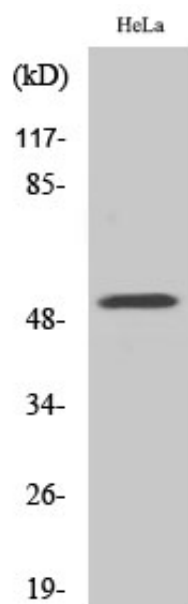
Catalog_no :	AT1809
Applications :	WB,ELISA
Reactivity :	Human,Mouse
Category :	抗原抗体
Size :	100µg/50µg/20µg
Gene_name :	G3BP2
Protein_name :	Ras GTPase-activating protein-binding protein 2
Humangene_id :	9908
Humanswissprot_no :	Q9UN86
Mousegene_id :	23881
Mouseswissprot_no :	P97379
Immunogen :	The antiserum was produced against synthesized peptide derived from human G3BP2. AA range:433-482
Specificity :	G3BP2 Polyclonal Antibody detects endogenous levels of G3BP2 protein.
Formulation :	Liquid in PBS containing 50% glycerol, 0.5% BSA and 0.02% sodium azide.
Source :	Rabbit
Dilution :	Western Blot: 1/500 - 1/2000. ELISA: 1/10000. Not yet tested in other applications.
Purification :	The antibody was affinity-purified from rabbit antiserum by affinity-chromatography using epitope-specific immunogen.
Concentration :	1 mg/ml
Storage_stability :	-20°C/1 year
Msds :	MSDS_Antibody.pdf
Other_name :	G3BP2; KIAA0660; Ras GTPase-activating protein-binding protein 2; G3BP-2; GAP SH3 domain-binding protein 2
Molecular Weight :	55KD



专注二抗产品

Biodragon旗下品牌

Product Images



Western Blot analysis of various cells using G3BP2 Polyclonal Antibody