

GABAA R α 6 Polyclonal Antibody

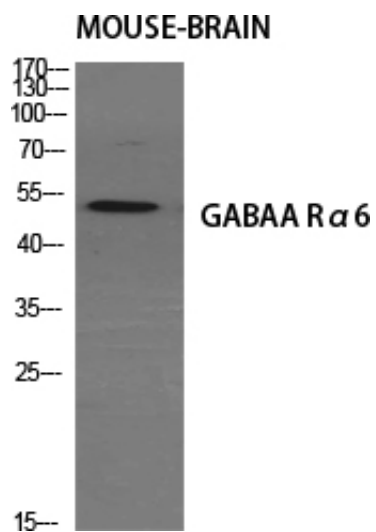
Catalog_no :	<u>AT1823</u>
Applications :	<u>WB,ELISA</u>
Reactivity :	<u>Human,Mouse,Rat</u>
Category :	<u>抗原抗体</u>
Size :	<u>100μg/50μg/20μg</u>
Gene_name :	<u>GABRA6</u>
Protein_name :	<u>Gamma-aminobutyric acid receptor subunit alpha-6</u>
Humangene_id :	<u>2559</u>
Humanswissprot_no :	<u>Q16445</u>
Mousegene_id :	<u>14399</u>
Mouseswissprot_no :	<u>P16305</u>
Ratgene_id :	<u>29708</u>
Ratswissprot_no :	<u>P30191</u>
Immunogen :	<u>The antiserum was produced against synthesized peptide derived from human GABRA6. AA range:61-110</u>
Specificity :	<u>GABAA Rα6 Polyclonal Antibody detects endogenous levels of GABAA Rα6 protein.</u>
Formulation :	<u>Liquid in PBS containing 50% glycerol, 0.5% BSA and 0.02% sodium azide.</u>
Source :	<u>Rabbit</u>
Dilution :	<u>Western Blot: 1/500 - 1/2000. ELISA: 1/40000. Not yet tested in other applications.</u>
Purification :	<u>The antibody was affinity-purified from rabbit antiserum by affinity-chromatography using epitope-specific immunogen.</u>
Concentration :	<u>1 mg/ml</u>
Storage_stability :	<u>-20°C/1 year</u>
Msds :	<u>MSDS_Antibody.pdf</u>



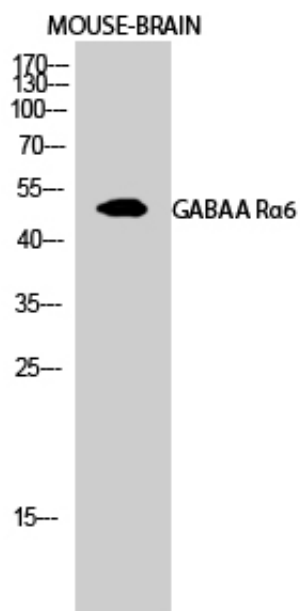
Other_name : GABRA6; Gamma-aminobutyric acid receptor subunit alpha-6; GABA(A) receptor subunit alpha-6

Molecular Weight : 51KD

Product Images



Western Blot analysis of various cells using GABAA R α 6 Polyclonal Antibody diluted at 1 : 500



Western Blot analysis of MOUSE-BRAIN cells using GABAA R α 6 Polyclonal Antibody diluted at 1 : 500