

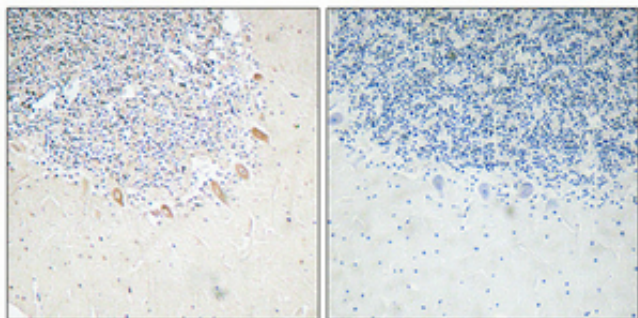
GABAA R β 2 Polyclonal Antibody

Catalog_no :	<u>AT1825</u>
Applications :	<u>IHC-p,ELISA</u>
Reactivity :	<u>Human,Mouse,Rat</u>
Category :	<u>抗原抗体</u>
Size :	<u>100μg/50μg/20μg</u>
Gene_name :	<u>GABRB2</u>
Protein_name :	<u>Gamma-aminobutyric acid receptor subunit beta-2</u>
Humangene_id :	<u>2561</u>
Humanswissprot_no :	<u>P47870</u>
Mousegene_id :	<u>14401</u>
Mouseswissprot_no :	<u>P63137</u>
Ratgene_id :	<u>25451</u>
Ratswissprot_no :	<u>P63138</u>
Immunogen :	<u>The antiserum was produced against synthesized peptide derived from human GABAA Rbeta2. AA range:382-431</u>
Specificity :	<u>GABAA Rβ2 Polyclonal Antibody detects endogenous levels of GABAA Rβ2 protein.</u>
Formulation :	<u>Liquid in PBS containing 50% glycerol, 0.5% BSA and 0.02% sodium azide.</u>
Source :	<u>Rabbit</u>
Dilution :	<u>Immunohistochemistry: 1/100 - 1/300. ELISA: 1/10000. Not yet tested in other applications.</u>
Purification :	<u>The antibody was affinity-purified from rabbit antiserum by affinity-chromatography using epitope-specific immunogen.</u>
Concentration :	<u>1 mg/ml</u>
Storage_stability :	<u>-20°C/1 year</u>
Msds :	<u>MSDS_Antibody.pdf</u>



Other_name : GABRB2; Gamma-aminobutyric acid receptor subunit beta-2; GABA(A) receptor subunit beta-2

Product Images



Immunohistochemical analysis of paraffin-embedded Human brain. Antibody was diluted at 1:100(4°,overnight). High-pressure and temperature Tris-EDTA,pH8.0 was used for antigen retrieval. Negative contrl (right) obtaned from antibody was pre-absorbed by immunogen peptide.