

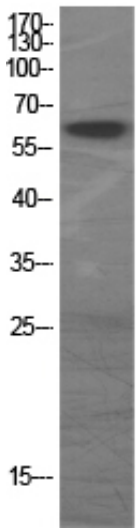
GAD-65/67 Polyclonal Antibody

Catalog_no :	AT1830
Applications :	WB,IHC-p,IF,ELISA
Reactivity :	Human,Mouse
Category :	抗原抗体
Size :	100µg/50µg/20µg
Gene_name :	GAD1/GAD2
Protein_name :	Glutamate decarboxylase 1/2
Humangene_id :	2571/2572
Humanswissprot_no :	Q99259/Q05329
Mousegene_id :	14415/14417
Immunogen :	The antiserum was produced against synthesized peptide derived from human GAD1/2. AA range:545-594
Specificity :	GAD-65/67 Polyclonal Antibody detects endogenous levels of GAD-65/67 protein.
Formulation :	Liquid in PBS containing 50% glycerol, 0.5% BSA and 0.02% sodium azide.
Source :	Rabbit
Dilution :	Western Blot: 1/500 - 1/2000. Immunohistochemistry: 1/100 - 1/300. Immunofluorescence: 1/200 - 1/1000. ELISA: 1/5000. Not yet tested in other applications.
Purification :	The antibody was affinity-purified from rabbit antiserum by affinity-chromatography using epitope-specific immunogen.
Concentration :	1 mg/ml
Storage_stability :	-20°C/1 year
Msds :	MSDS_Antibody.pdf
Other_name :	GAD1; GAD; GAD67; Glutamate decarboxylase 1; 67 kDa glutamic acid decarboxylase; GAD-67; Glutamate decarboxylase 67 kDa isoform; GAD2; GAD65; Glutamate decarboxylase 2; 65 kDa glutamic acid decarboxylase; GAD-65; Glutamate decarboxylase 65
Molecular	65KD

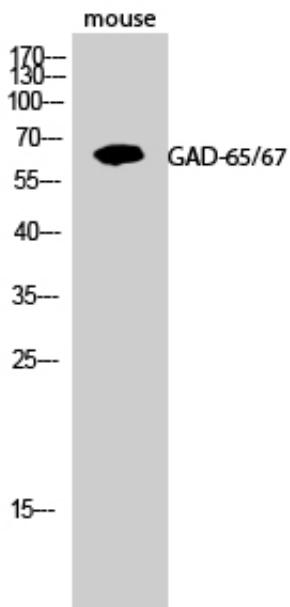


Weight :

Product Images



Western Blot analysis of various cells using GAD-65/67 Polyclonal Antibody



Western Blot analysis of mouse cells using GAD-65/67 Polyclonal Antibody