

GADD 45y Polyclonal Antibody

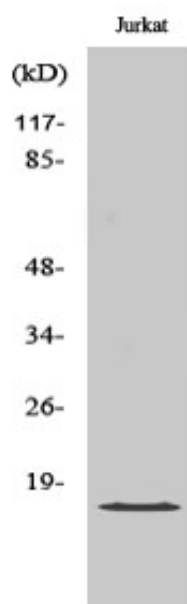
Catalog_no :	AT1832
Applications :	WB,IHC-p,IF,ELISA
Reactivity :	Human,Mouse,Rat
Category :	抗原抗体
Size :	100µg/50µg/20µg
Gene_name :	GADD45G
Protein_name :	Growth arrest and DNA damage-inducible protein GADD45 gamma
Humangene_id	10912
:	
Humanswissprot	O95257
_no :	
Mouseswissprot	Q9Z111
_no :	
Ratgene_id :	291005
Ratswissprot_no	Q9WTQ7
:	
Immunogen :	The antiserum was produced against synthesized peptide derived from human GA45G. AA range:101-150
Specificity :	GADD 45y Polyclonal Antibody detects endogenous levels of GADD 45y protein.
Formulation :	Liquid in PBS containing 50% glycerol, 0.5% BSA and 0.02% sodium azide.
Source :	Rabbit
Dilution :	Western Blot: 1/500 - 1/2000. Immunohistochemistry: 1/100 - 1/300. Immunofluorescence: 1/200 - 1/1000. ELISA: 1/5000. Not yet tested in other applications.
Purification :	The antibody was affinity-purified from rabbit antiserum by affinity-chromatography using epitope-specific immunogen.
Concentration :	1 mg/ml
Storage_stability	-20°C/1 year
:	
Msds :	MSDS_Antibody.pdf



Other_name : GADD45G; CR6; DDIT2; Growth arrest and DNA damage-inducible protein GADD45 gamma; Cytokine-responsive protein CR6; DNA damage-inducible transcript 2 protein; DDIT-2

Molecular Weight : 19KD

Product Images



Western Blot analysis of various cells using GADD 45y Polyclonal Antibody