



Galectin-1 Polyclonal Antibody

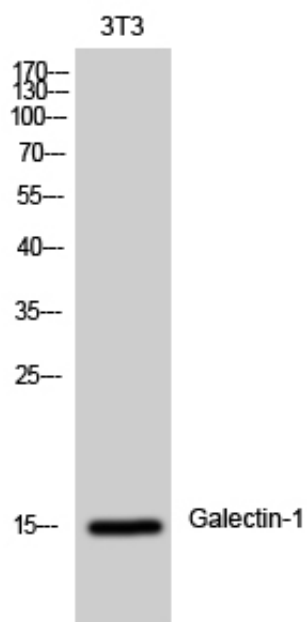
Catalog_no :	<u>AT1836</u>
Applications :	<u>WB,ELISA</u>
Reactivity :	<u>Human,Rat</u>
Category :	<u>抗原抗体</u>
Size :	<u>100µg/50µg/20µg</u>
Gene_name :	<u>LGALS1</u>
Protein_name :	<u>Galectin-1</u>
Humangene_id :	<u>3956</u>
Humanswissprot_no :	<u>P09382</u>
Ratgene_id :	<u>56646</u>
Ratswissprot_no :	<u>P11762</u>
Immunogen :	<u>Synthesized peptide derived from Galectin-1 . at AA range: 10-90</u>
Specificity :	<u>Galectin-1 Polyclonal Antibody detects endogenous levels of Galectin-1 protein.</u>
Formulation :	<u>Liquid in PBS containing 50% glycerol, 0.5% BSA and 0.02% sodium azide.</u>
Source :	<u>Rabbit</u>
Dilution :	<u>Western Blot: 1/500 - 1/2000. ELISA: 1/40000. Not yet tested in other applications.</u>
Purification :	<u>The antibody was affinity-purified from rabbit antiserum by affinity-chromatography using epitope-specific immunogen.</u>
Concentration :	<u>1 mg/ml</u>
Storage_stability :	<u>-20°C/1 year</u>
Msds :	<u>MSDS_Antibody.pdf</u>
Other_name :	<u>LGALS1; Galectin-1; Gal-1; 14 kDa laminin-binding protein; HLBP14; 14 kDa lectin; Beta-galactoside-binding lectin L-14-I; Galaptin; HBL; HPL; Lactose-binding lectin 1; Lectin galactoside-binding soluble 1; Putative MAPK-activating protein P</u>
Molecular Weight :	<u>15KD</u>



专注二抗产品

Biodragon旗下品牌

Product Images



Western Blot analysis of 3T3 cells using Galectin-1
Polyclonal Antibody diluted at 1 : 500