

Galectin-8 Polyclonal Antibody

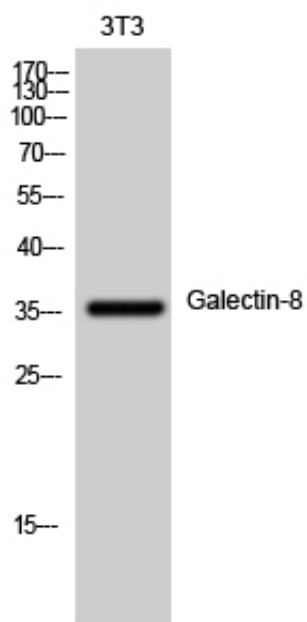
Catalog_no :	AT1840
Applications :	WB,IHC-p,IF,ELISA
Reactivity :	Human,Mouse
Category :	抗原抗体
Size :	100µg/50µg/20µg
Gene_name :	LGALS8
Protein_name :	Galectin-8
Humangene_id :	3964
Humanswissprot_no :	O00214
Mousegene_id :	56048
Mouseswissprot_no :	Q9JL15
Immunogen :	The antiserum was produced against synthesized peptide derived from human LEG8. AA range:61-110
Specificity :	Galectin-8 Polyclonal Antibody detects endogenous levels of Galectin-8 protein.
Formulation :	Liquid in PBS containing 50% glycerol, 0.5% BSA and 0.02% sodium azide.
Source :	Rabbit
Dilution :	Western Blot: 1/500 - 1/2000. Immunohistochemistry: 1/100 - 1/300. Immunofluorescence: 1/200 - 1/1000. ELISA: 1/20000. Not yet tested in other applications.
Purification :	The antibody was affinity-purified from rabbit antiserum by affinity-chromatography using epitope-specific immunogen.
Concentration :	1 mg/ml
Storage_stability :	-20°C/1 year
Msds :	MSDS_Antibody.pdf
Other_name :	LGALS8; Galectin-8; Gal-8; Po66 carbohydrate-binding protein; Po66-CBP; Prostate carcinoma tumor antigen 1; PCTA-1



Molecular
Weight :

36KD

Product Images



Western Blot analysis of 3T3 cells using Galectin-8
Polyclonal Antibody diluted at 1 : 1000