



## Galectin-9 Polyclonal Antibody

Catalog_no :	AT1841
Applications :	WB,IHC-p,IF,ELISA
Reactivity :	Human,Mouse,Rat
Category :	抗原抗体
Size :	100µg/50µg/20µg
Gene_name :	LGALS9
Protein_name :	Galectin-9
Humangene_id :	<a href="#">3965</a>
Humanswissprot_no :	<a href="#">O00182</a>
Mousegene_id :	<a href="#">16859</a>
Mouseswissprot_no :	<a href="#">O08573</a>
Ratgene_id :	<a href="#">25476</a>
Ratswissprot_no :	<a href="#">P97840</a>
Immunogen :	The antiserum was produced against synthesized peptide derived from human LEG9. AA range:51-100
Specificity :	Galectin-9 Polyclonal Antibody detects endogenous levels of Galectin-9 protein.
Formulation :	Liquid in PBS containing 50% glycerol, 0.5% BSA and 0.02% sodium azide.
Source :	Rabbit
Dilution :	Western Blot: 1/500 - 1/2000. Immunohistochemistry: 1/100 - 1/300. Immunofluorescence: 1/200 - 1/1000. ELISA: 1/10000. Not yet tested in other applications.
Purification :	The antibody was affinity-purified from rabbit antiserum by affinity-chromatography using epitope-specific immunogen.
Concentration :	1 mg/ml
Storage_stability :	-20°C/1 year

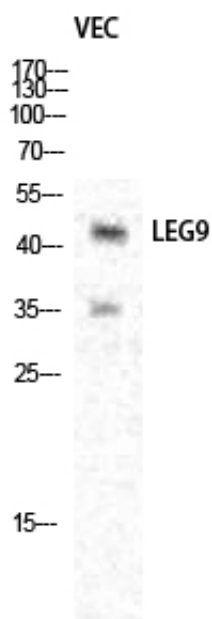


MsdS : MSDS\_Antibody.pdf

Other\_name : LGALS9; Galectin-9; Gal-9; Ecalectin; Tumor antigen HOM-HD-21

Molecular Weight : 40KD

## Product Images



Western Blot analysis of various cells using Galectin-9 Polyclonal Antibody diluted at 1 : 1000



Western Blot analysis of HepG2 cells using Galectin-9 Polyclonal Antibody diluted at 1 : 1000