

## GAP1-InsP4 BP Polyclonal Antibody

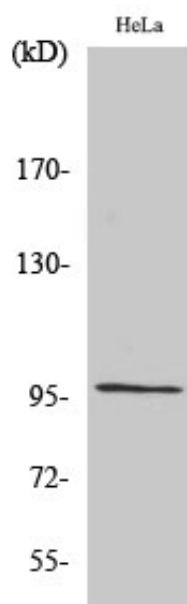
Catalog_no :	AT1848
Applications :	WB,ELISA
Reactivity :	Human,Mouse,Rat
Category :	抗原抗体
Size :	100µg/50µg/20µg
Gene_name :	RASA3
Protein_name :	Ras GTPase-activating protein 3
Humangene_id :	<a href="#">22821</a>
Humanswissprot_no :	<a href="#">Q14644</a>
Mousegene_id :	<a href="#">19414</a>
Mouseswissprot_no :	<a href="#">Q60790</a>
Ratgene_id :	<a href="#">29372</a>
Ratswissprot_no :	<a href="#">Q9QYJ2</a>
Immunogen :	The antiserum was produced against synthesized peptide derived from human RASA3. AA range:247-296
Specificity :	GAP1-InsP4 BP Polyclonal Antibody detects endogenous levels of GAP1-InsP4 BP protein.
Formulation :	Liquid in PBS containing 50% glycerol, 0.5% BSA and 0.02% sodium azide.
Source :	Rabbit
Dilution :	Western Blot: 1/500 - 1/2000. ELISA: 1/40000. Not yet tested in other applications.
Purification :	The antibody was affinity-purified from rabbit antiserum by affinity-chromatography using epitope-specific immunogen.
Concentration :	1 mg/ml
Storage_stability :	-20°C/1 year
Msds :	MSDS_Antibody.pdf



Other\_name : RASA3; Ras GTPase-activating protein 3; GAP1(IP4BP); Ins P4-binding protein

Molecular Weight : 95KD

## Product Images



Western Blot analysis of various cells using GAP1-InsP4 BP Polyclonal Antibody