

## GAS3 Polyclonal Antibody

Catalog_no :	AT1851
Applications :	WB,IHC-p,ELISA
Reactivity :	Human,Mouse,Rat
Category :	抗原抗体
Size :	100µg/50µg/20µg
Gene_name :	PMP22
Protein_name :	Peripheral myelin protein 22
Humangene_id :	<a href="#">5376</a>
Humanswissprot_no :	<a href="#">Q01453</a>
Mousegene_id :	<a href="#">18858</a>
Mouseswissprot_no :	<a href="#">P16646</a>
Ratgene_id :	<a href="#">24660</a>
Ratswissprot_no :	<a href="#">P25094</a>
Immunogen :	The antiserum was produced against synthesized peptide derived from human PMP22. AA range:111-160
Specificity :	GAS3 Polyclonal Antibody detects endogenous levels of GAS3 protein.
Formulation :	Liquid in PBS containing 50% glycerol, 0.5% BSA and 0.02% sodium azide.
Source :	Rabbit
Dilution :	Western Blot: 1/500 - 1/2000. Immunohistochemistry: 1/100 - 1/300. ELISA: 1/40000. Not yet tested in other applications.
Purification :	The antibody was affinity-purified from rabbit antiserum by affinity-chromatography using epitope-specific immunogen.
Concentration :	1 mg/ml
Storage_stability :	-20°C/1 year
Msds :	MSDS_Antibody.pdf



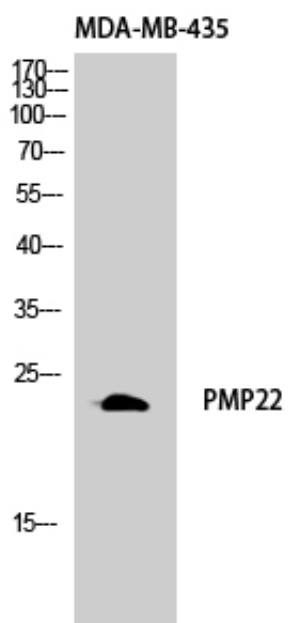
Other\_name : PMP22; GAS3; Peripheral myelin protein 22; PMP-22; Growth arrest-specific protein 3; GAS-3

---

Molecular Weight : 22KD

---

## Product Images



Western Blot analysis of MDA-MB-435 cells using GAS3 Polyclonal Antibody diluted at 1 : 1000