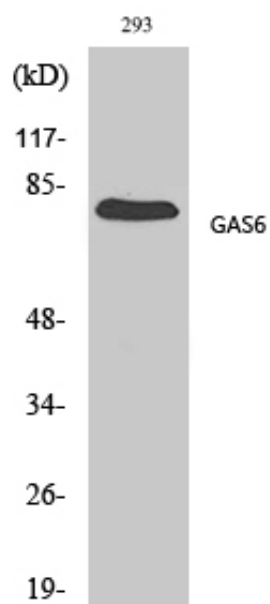




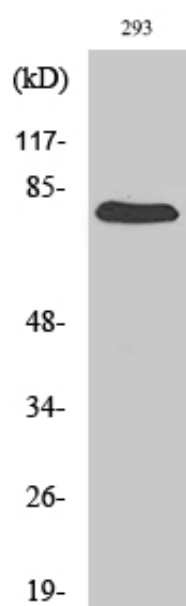
Gas6 Polyclonal Antibody

Catalog_no :	AT1853
Applications :	WB,IHC-p,ELISA
Reactivity :	Human
Category :	抗原抗体
Size :	100µg/50µg/20µg
Gene_name :	GAS6
Protein_name :	Growth arrest-specific protein 6
Humangene_id :	2621
Humanswissprot_no :	Q14393
Immunogen :	The antiserum was produced against synthesized peptide derived from human GAS6. AA range:291-340
Specificity :	Gas6 Polyclonal Antibody detects endogenous levels of Gas6 protein.
Formulation :	Liquid in PBS containing 50% glycerol, 0.5% BSA and 0.02% sodium azide.
Source :	Rabbit
Dilution :	Western Blot: 1/500 - 1/2000. Immunohistochemistry: 1/100 - 1/300. ELISA: 1/40000. Not yet tested in other applications.
Purification :	The antibody was affinity-purified from rabbit antiserum by affinity-chromatography using epitope-specific immunogen.
Concentration :	1 mg/ml
Storage_stability :	-20°C/1 year
Msds :	MSDS_Antibody.pdf
Other_name :	GAS6; AXLLG; Growth arrest-specific protein 6; GAS-6; AXL receptor tyrosine kinase ligand
Molecular Weight :	75KD

Product Images



Western Blot analysis of various cells using Gas6 Polyclonal Antibody diluted at 1 : 500



Western Blot analysis of 293 cells using Gas6 Polyclonal Antibody diluted at 1 : 500