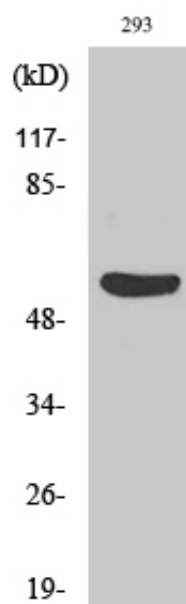


Gasdermin C Polyclonal Antibody

Catalog_no :	AT1855
Applications :	WB,ELISA
Reactivity :	Human
Category :	抗原抗体
Size :	100µg/50µg/20µg
Gene_name :	GSDMC
Protein_name :	Gasdermin-C
Humangene_id :	56169
Humanswissprot_no :	Q9BYG8
Immunogen :	The antiserum was produced against synthesized peptide derived from human GSDMC. AA range:109-158
Specificity :	Gasdermin C Polyclonal Antibody detects endogenous levels of Gasdermin C protein.
Formulation :	Liquid in PBS containing 50% glycerol, 0.5% BSA and 0.02% sodium azide.
Source :	Rabbit
Dilution :	Western Blot: 1/500 - 1/2000. ELISA: 1/10000. Not yet tested in other applications.
Purification :	The antibody was affinity-purified from rabbit antiserum by affinity-chromatography using epitope-specific immunogen.
Concentration :	1 mg/ml
Storage_stability :	-20°C/1 year
Msds :	MSDS_Antibody.pdf
Other_name :	GSDMC; MLZE; Gasdermin-C; Melanoma-derived leucine zipper-containing extranuclear factor
Molecular Weight :	55KD

Product Images



Western Blot analysis of various cells using Gasdermin C Polyclonal Antibody diluted at 1 : 500