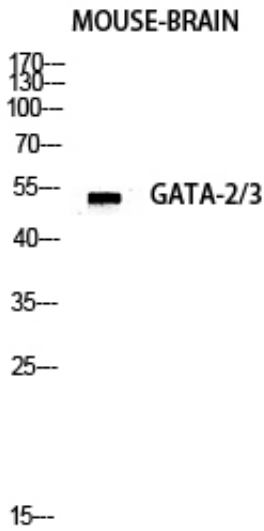


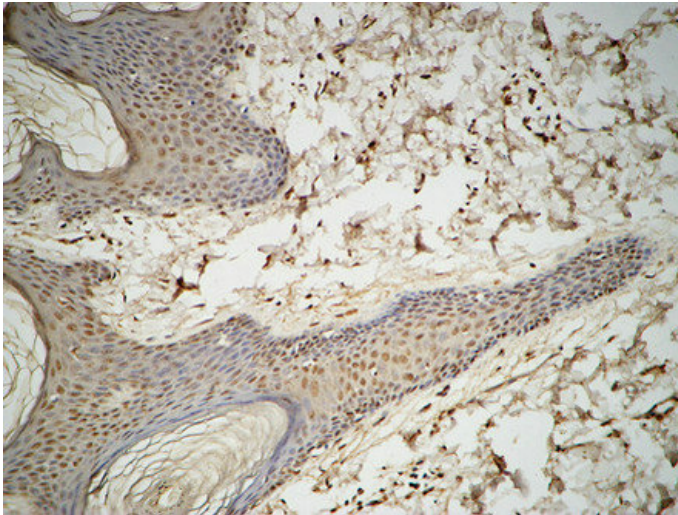
GATA-2/3 Polyclonal Antibody

Catalog_no :	<u>AT1860</u>
Applications :	<u>WB,IHC-p,IF,ELISA</u>
Reactivity :	<u>Human,Mouse</u>
Category :	<u>抗原抗体</u>
Size :	<u>100µg/50µg/20µg</u>
Gene_name :	<u>GATA2/GATA3</u>
Protein_name :	<u>rans-acting T-cell-specific transcription factor GATA-2/3</u>
Humangene_id :	<u>2625</u>
Humanswissprot_no :	<u>P23771/P23769</u>
Mousegene_id :	<u>14462/14461</u>
Immunogen :	<u>The antiserum was produced against synthesized peptide derived from human GATA3. AA range:274-323</u>
Specificity :	<u>GATA-2/3 Polyclonal Antibody detects endogenous levels of GATA-2/3 protein.</u>
Formulation :	<u>Liquid in PBS containing 50% glycerol, 0.5% BSA and 0.02% sodium azide.</u>
Source :	<u>Rabbit</u>
Dilution :	<u>Immunohistochemistry: 1/100 - 1/300. Immunofluorescence: 1/200 - 1/1000. ELISA: 1/5000. Not yet tested in other applications.</u>
Purification :	<u>The antibody was affinity-purified from rabbit antiserum by affinity-chromatography using epitope-specific immunogen.</u>
Concentration :	<u>1 mg/ml</u>
Storage_stability :	<u>-20°C/1 year</u>
Msds :	<u>MSDS_Antibody.pdf</u>
Other_name :	<u>GATA3; Trans-acting T-cell-specific transcription factor GATA-3; GATA-binding factor 3; GATA2; Endothelial transcription factor GATA-2; GATA-binding protein 2</u>

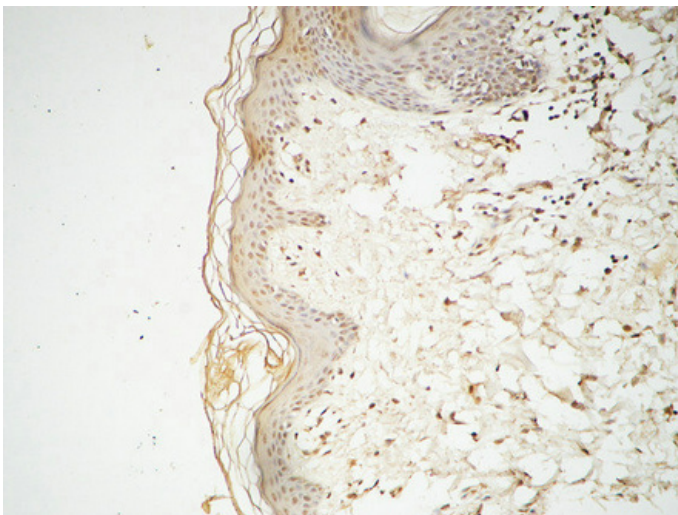
Product Images



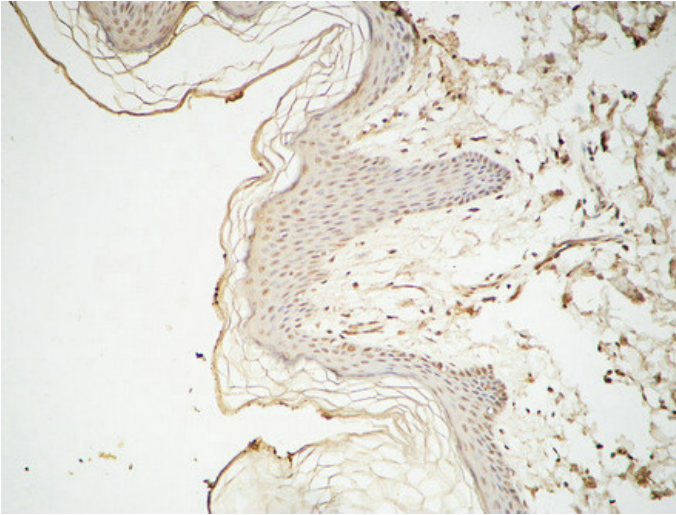
Western blot analysis of mouse-lung lysis using GATA-2/3 antibody. Antibody was diluted at 1:500 cells nucleus extracted by Minute TM Cytoplasmic and Nuclear Fractionation kit (SC-003, Invent biotech, MN, USA).



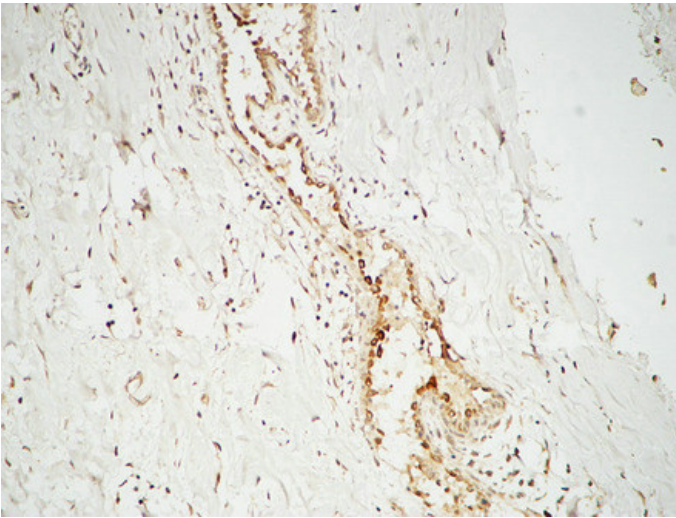
Immunohistochemical analysis of paraffin-embedded Human skin. 1, Antibody was diluted at 1:100(4°, overnight). 2, High-pressure and temperature EDTA, pH8.0 was used for antigen retrieval. 3, Secondary antibody was diluted at 1:200(room temperature, 30min).



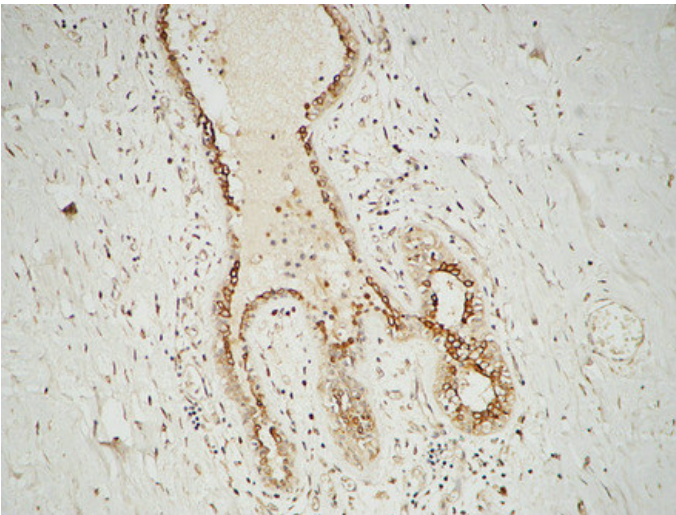
Immunohistochemical analysis of paraffin-embedded Human skin. 1, Antibody was diluted at 1:100(4°, overnight). 2, High-pressure and temperature EDTA, pH8.0 was used for antigen retrieval. 3, Secondary antibody was diluted at 1:200(room temperature, 30min).



Immunohistochemical analysis of paraffin-embedded Human skin. 1, Antibody was diluted at 1:100(4°,overnight). 2, High-pressure and temperature EDTA, pH8.0 was used for antigen retrieval. 3,Secondary antibody was diluted at 1:200(room temperature, 30min).



Immunohistochemical analysis of paraffin-embedded Human breast. 1, Antibody was diluted at 1:100(4°,overnight). 2, High-pressure and temperature EDTA, pH8.0 was used for antigen retrieval. 3,Secondary antibody was diluted at 1:200(room temperature, 30min).



Immunohistochemical analysis of paraffin-embedded Human breast. 1, Antibody was diluted at 1:100(4°,overnight). 2, High-pressure and temperature EDTA, pH8.0 was used for antigen retrieval. 3,Secondary antibody was diluted at 1:200(room temperature, 30min).

Immunohistochemical analysis of paraffin-embedded Human breast. 1, Antibody was diluted at 1:100(4°,overnight). 2, High-pressure and temperature EDTA, pH8.0 was used for antigen retrieval. 3,Secondary antibody was diluted at 1:200(room temperature, 30min).

