



GCG Polyclonal Antibody

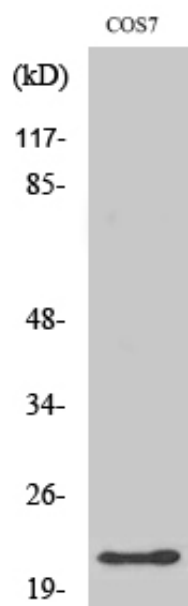
Catalog_no :	AT1871
Applications :	WB,IHC-p,IF,ELISA
Reactivity :	Human,Mouse,Rat,Monkey
Category :	抗原抗体
Size :	100µg/50µg/20µg
Gene_name :	GCG
Protein_name :	Glucagon
Humangene_id	2641
:	
Humanswissprot	P01275
_no :	
Mousegene_id :	14526
Mouseswissprot	P55095
_no :	
Ratswissprot_no	P06883
:	
Immunogen :	The antiserum was produced against synthesized peptide derived from human Glucagon. AA range:61-110
Specificity :	GCG Polyclonal Antibody detects endogenous levels of GCG protein.
Formulation :	Liquid in PBS containing 50% glycerol, 0.5% BSA and 0.02% sodium azide.
Source :	Rabbit
Dilution :	Western Blot: 1/500 - 1/2000. Immunohistochemistry: 1/100 - 1/300. Immunofluorescence: 1/200 - 1/1000. ELISA: 1/40000. Not yet tested in other applications.
Purification :	The antibody was affinity-purified from rabbit antiserum by affinity-chromatography using epitope-specific immunogen.
Concentration :	1 mg/ml
Storage_stability	-20°C/1 year
:	
Msds :	MSDS_Antibody.pdf



Other_name : GCG; Glucagon

Molecular Weight : 25KD

Product Images



Western Blot analysis of various cells using GCG Polyclonal Antibody