

GCP3 Polyclonal Antibody

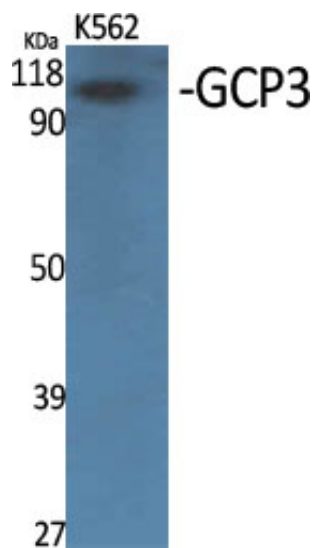
Catalog_no :	<u>AT1879</u>
Applications :	<u>WB,IHC-p,ELISA</u>
Reactivity :	<u>Human,Mouse</u>
Category :	<u>抗原抗体</u>
Size :	<u>100µg/50µg/20µg</u>
Gene_name :	<u>TUBGCP3</u>
Protein_name :	<u>Gamma-tubulin complex component 3</u>
Humangene_id :	<u>10426</u>
Humanswissprot_no :	<u>Q96CW5</u>
Mousegene_id :	<u>259279</u>
Mouseswissprot_no :	<u>P58854</u>
Immunogen :	<u>The antiserum was produced against synthesized peptide derived from human TUBGCP3. AA range:201-250</u>
Specificity :	<u>GCP3 Polyclonal Antibody detects endogenous levels of GCP3 protein.</u>
Formulation :	<u>Liquid in PBS containing 50% glycerol, 0.5% BSA and 0.02% sodium azide.</u>
Source :	<u>Rabbit</u>
Dilution :	<u>Western Blot: 1/500 - 1/2000. Immunohistochemistry: 1/100 - 1/300. ELISA: 1/20000. Not yet tested in other applications.</u>
Purification :	<u>The antibody was affinity-purified from rabbit antiserum by affinity-chromatography using epitope-specific immunogen.</u>
Concentration :	<u>1 mg/ml</u>
Storage_stability :	<u>-20°C/1 year</u>
Msds :	<u>MSDS_Antibody.pdf</u>
Other_name :	<u>TUBGCP3; GCP3; Gamma-tubulin complex component 3; GCP-3; hGCP3; Gamma-ring complex protein 104 kDa; h104p; hGrip104; Spindle pole body protein Spc98 homolog; hSpc98</u>



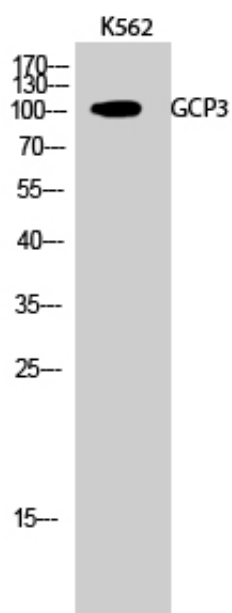
Molecular
Weight :

105KD

Product Images



Western Blot analysis of various cells using GCP3 Polyclonal Antibody



Western Blot analysis of K562 cells using GCP3 Polyclonal Antibody