



GCP5 Polyclonal Antibody

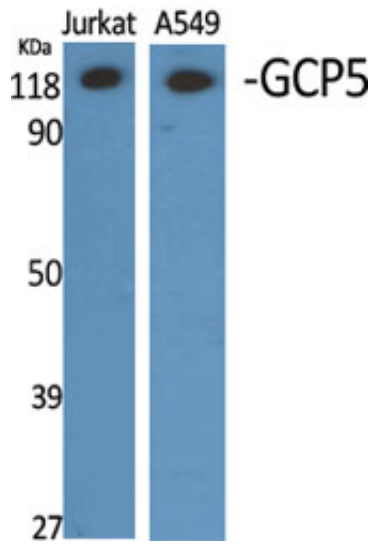
Catalog_no :	AT1881
Applications :	WB,IHC-p,ELISA
Reactivity :	Human,Mouse,Rat
Category :	抗原抗体
Size :	100µg/50µg/20µg
Gene_name :	TUBGCP5
Protein_name :	Gamma-tubulin complex component 5
Humangene_id :	114791
Humanswissprot_no :	Q96RT8
Mousegene_id :	233276
Mouseswissprot_no :	Q8BKN5
Immunogen :	The antiserum was produced against synthesized peptide derived from human TUBGCP5. AA range:741-790
Specificity :	GCP5 Polyclonal Antibody detects endogenous levels of GCP5 protein.
Formulation :	Liquid in PBS containing 50% glycerol, 0.5% BSA and 0.02% sodium azide.
Source :	Rabbit
Dilution :	Western Blot: 1/500 - 1/2000. Immunohistochemistry: 1/100 - 1/300. ELISA: 1/20000. Not yet tested in other applications.
Purification :	The antibody was affinity-purified from rabbit antiserum by affinity-chromatography using epitope-specific immunogen.
Concentration :	1 mg/ml
Storage_stability :	-20°C/1 year
Msds :	MSDS_Antibody.pdf
Other_name :	TUBGCP5; GCP5; KIAA1899; Gamma-tubulin complex component 5; GCP-5
Molecular Weight :	118KD



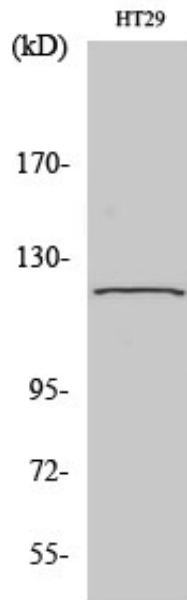
专注二抗产品

Biodragon旗下品牌

Product Images

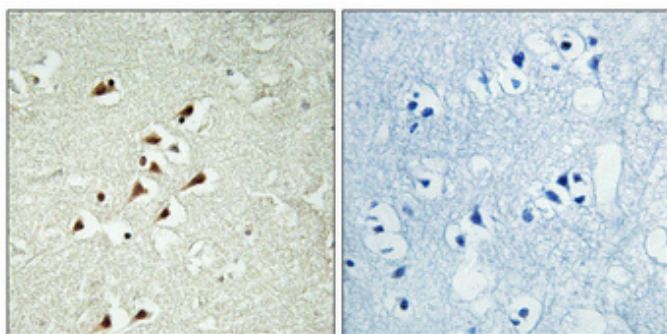
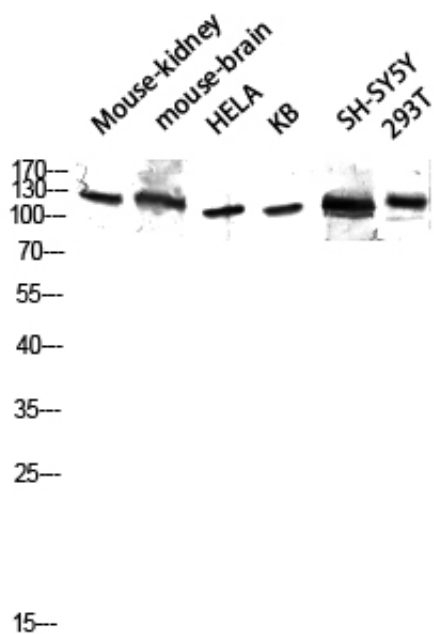


Western Blot analysis of various cells using GCP5 Polyclonal Antibody diluted at 1 : 2000



Western Blot analysis of 293 cells using GCP5 Polyclonal Antibody diluted at 1 : 2000

Western blot analysis of Mouse-kidney mouse-brain HELA KB SH-SY5Y 293T lysis using GCP5 antibody. Antibody was diluted at 1:2000



Immunohistochemical analysis of paraffin-embedded Human brain. Antibody was diluted at 1:100(4°,overnight). High-pressure and temperature Tris-EDTA,pH8.0 was used for antigen retrieval. Negative contrl (right) obtaned from antibody was pre-absorbed by immunogen peptide.