

GCSm-γ Polyclonal Antibody

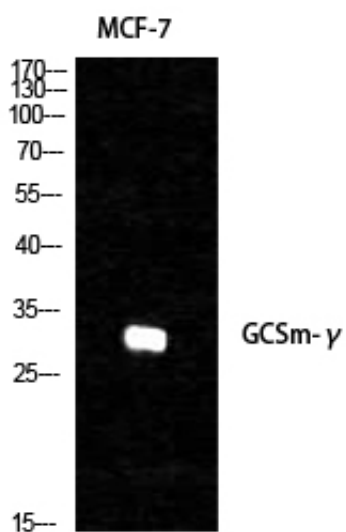
Catalog_no :	<u>AT1884</u>
Applications :	<u>WB,IHC-p,ELISA</u>
Reactivity :	<u>Human,Mouse,Rat,Monkey</u>
Category :	<u>抗原抗体</u>
Size :	<u>100μg/50μg/20μg</u>
Gene_name :	<u>GCLM</u>
Protein_name :	<u>Glutamate--cysteine ligase regulatory subunit</u>
Humangene_id :	<u>2730</u>
Humanswissprot_no :	<u>P48507</u>
Mousegene_id :	<u>14630</u>
Mouseswissprot_no :	<u>O09172</u>
Ratgene_id :	<u>29739</u>
Ratswissprot_no :	<u>P48508</u>
Immunogen :	<u>The antiserum was produced against synthesized peptide derived from human GCSm-γ. AA range:42-91</u>
Specificity :	<u>GCSm-γ Polyclonal Antibody detects endogenous levels of GCSm-γ protein.</u>
Formulation :	<u>Liquid in PBS containing 50% glycerol, 0.5% BSA and 0.02% sodium azide.</u>
Source :	<u>Rabbit</u>
Dilution :	<u>Western Blot: 1/500 - 1/2000. Immunohistochemistry: 1/100 - 1/300. ELISA: 1/10000. Not yet tested in other applications.</u>
Purification :	<u>The antibody was affinity-purified from rabbit antiserum by affinity-chromatography using epitope-specific immunogen.</u>
Concentration :	<u>1 mg/ml</u>
Storage_stability :	<u>-20°C/1 year</u>
Msds :	<u>MSDS_Antibody.pdf</u>



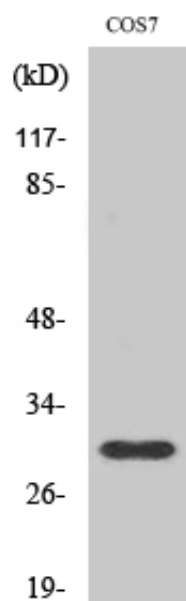
Other_name : GCLM; GLCLR; Glutamate--cysteine ligase regulatory subunit; GCS light chain; Gamma-ECS regulatory subunit; Gamma-glutamylcysteine synthetase regulatory subunit; Glutamate--cysteine ligase modifier subunit

Molecular Weight : 31KD

Product Images

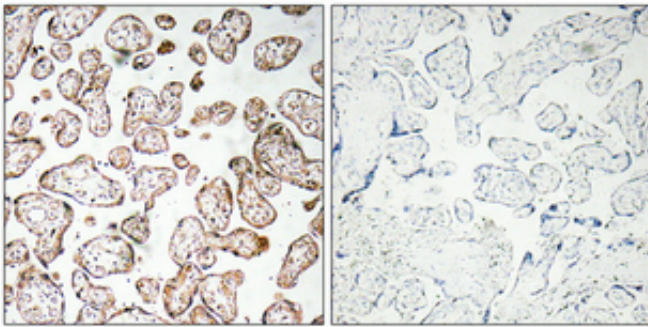
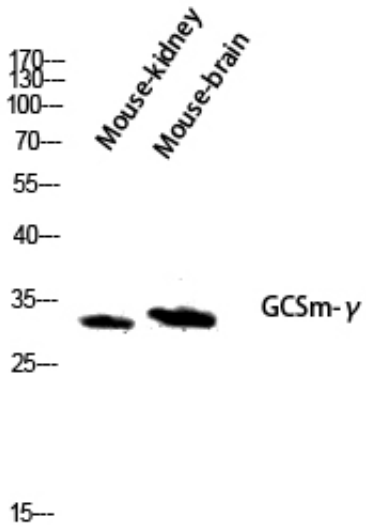


Western Blot analysis of various cells using GCSm- γ Polyclonal Antibody diluted at 1 : 1000



Western Blot analysis of COS7 cells using GCSm- γ Polyclonal Antibody diluted at 1 : 1000

Western blot analysis of Mouse-kidney mouse-brain lysis using GCSm- γ antibody. Antibody was diluted at 1:1000



Immunohistochemical analysis of paraffin-embedded Human placenta. Antibody was diluted at 1:100(4°,overnight). High-pressure and temperature Tris-EDTA,pH8.0 was used for antigen retrieval. Negative contrl (right) obtaned from antibody was pre-absorbed by immunogen peptide.