

GCS- α -1 Polyclonal Antibody

Catalog_no :	<u>AT1885</u>
Applications :	<u>WB,IHC-p,ELISA</u>
Reactivity :	<u>Human,Mouse,Rat</u>
Category :	<u>抗原抗体</u>
Size :	<u>100μg/50μg/20μg</u>
Gene_name :	<u>GUCY1A3</u>
Protein_name :	<u>Guanylate cyclase soluble subunit alpha-3</u>
Humangene_id	<u>2982</u>
:	
Humanswissprot	<u>Q02108</u>
_no :	
Mousegene_id :	<u>60596</u>
Mouseswissprot	<u>Q9ERL9</u>
_no :	
Ratswissprot_no	<u>P19686</u>
:	
Immunogen :	<u>The antiserum was produced against synthesized peptide derived from human GCS-alpha-1. AA range:374-423</u>
Specificity :	<u>GCS-α-1 Polyclonal Antibody detects endogenous levels of GCS-α-1 protein.</u>
Formulation :	<u>Liquid in PBS containing 50% glycerol, 0.5% BSA and 0.02% sodium azide.</u>
Source :	<u>Rabbit</u>
Dilution :	<u>Western Blot: 1/500 - 1/2000. Immunohistochemistry: 1/100 - 1/300. ELISA: 1/40000. Not yet tested in other applications.</u>
Purification :	<u>The antibody was affinity-purified from rabbit antiserum by affinity-chromatography using epitope-specific immunogen.</u>
Concentration :	<u>1 mg/ml</u>
Storage_stability	<u>-20°C/1 year</u>
:	
Msds :	<u>MSDS_Antibody.pdf</u>
Other_name :	<u>GUCY1A3; GUC1A3; GUCSA3; GUCY1A1; Guanylate cyclase soluble subunit alpha-3; GCS-</u>

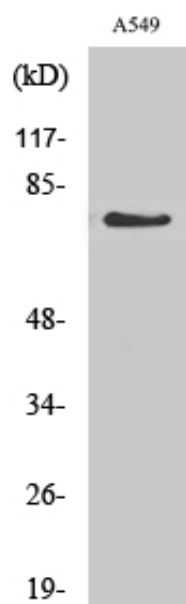


alpha-3; GCS-alpha-1; Soluble guanylate cyclase large subunit

Molecular
Weight :

77KD

Product Images



Western Blot analysis of various cells using GCS- α -1 Polyclonal Antibody