

GCS- β -1 Polyclonal Antibody

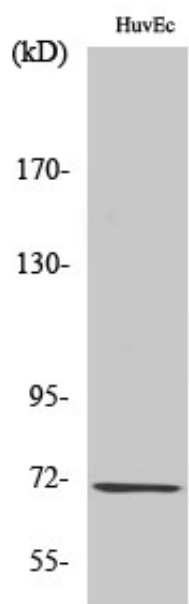
Catalog_no :	AT1886
Applications :	WB,IHC-p,ELISA
Reactivity :	Human,Mouse,Rat
Category :	抗原抗体
Size :	100 μ g/50 μ g/20 μ g
Gene_name :	GUCY1B3
Protein_name :	Guanylate cyclase soluble subunit beta-1
Humangene_id :	2983
Humanswissprot_no :	Q02153
Mousegene_id :	54195
Mouseswissprot_no :	O54865
Ratgene_id :	25202
Ratswissprot_no :	P20595
Immunogen :	The antiserum was produced against synthesized peptide derived from human Guanylate Cyclase beta. AA range:10-59
Specificity :	GCS- β -1 Polyclonal Antibody detects endogenous levels of GCS- β -1 protein.
Formulation :	Liquid in PBS containing 50% glycerol, 0.5% BSA and 0.02% sodium azide.
Source :	Rabbit
Dilution :	Western Blot: 1/500 - 1/2000. Immunohistochemistry: 1/100 - 1/300. ELISA: 1/5000. Not yet tested in other applications.
Purification :	The antibody was affinity-purified from rabbit antiserum by affinity-chromatography using epitope-specific immunogen.
Concentration :	1 mg/ml
Storage_stability :	-20°C/1 year
Msds :	MSDS_Antibody.pdf



Other_name : GUCY1B3; GUC1B3; GUCSB3; GUCY1B1; Guanylate cyclase soluble subunit beta-1; GCS-beta-1; Guanylate cyclase soluble subunit beta-3; GCS-beta-3; Soluble guanylate cyclase small subunit

Molecular Weight : 70KD

Product Images



Western Blot analysis of various cells using GCS- β -1 Polyclonal Antibody