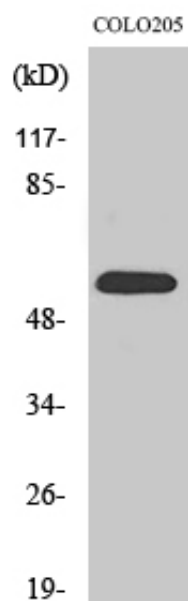




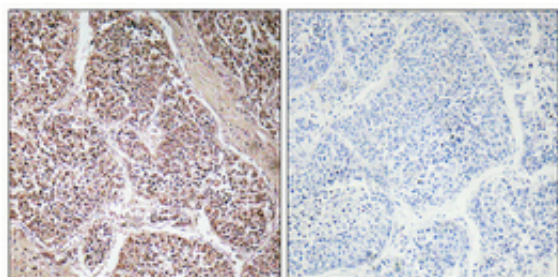
## GDF-9 Polyclonal Antibody

Catalog_no :	AT1891
Applications :	WB,IHC-p,ELISA
Reactivity :	Human
Category :	抗原抗体
Size :	100µg/50µg/20µg
Gene_name :	GDF9
Protein_name :	Growth/differentiation factor 9
Humangene_id :	<a href="#">2661</a>
Humanswissprot_no :	<a href="#">O60383</a>
Immunogen :	The antiserum was produced against synthesized peptide derived from human GDF-9. AA range:273-322
Specificity :	GDF-9 Polyclonal Antibody detects endogenous levels of GDF-9 protein.
Formulation :	Liquid in PBS containing 50% glycerol, 0.5% BSA and 0.02% sodium azide.
Source :	Rabbit
Dilution :	Western Blot: 1/500 - 1/2000. Immunohistochemistry: 1/100 - 1/300. ELISA: 1/10000. Not yet tested in other applications.
Purification :	The antibody was affinity-purified from rabbit antiserum by affinity-chromatography using epitope-specific immunogen.
Concentration :	1 mg/ml
Storage_stability :	-20°C/1 year
Msds :	<a href="#">MSDS_Antibody.pdf</a>
Other_name :	GDF9; Growth/differentiation factor 9; GDF-9
Molecular Weight :	57KD

## Product Images



Western Blot analysis of various cells using GDF-9 Polyclonal Antibody



Immunohistochemical analysis of paraffin-embedded Human lung cancer. Antibody was diluted at 1:100(4°,overnight). High-pressure and temperature Tris-EDTA,pH8.0 was used for antigen retrieval. Negative contrl (right) obtained from antibody was pre-absorbed by immunogen peptide.