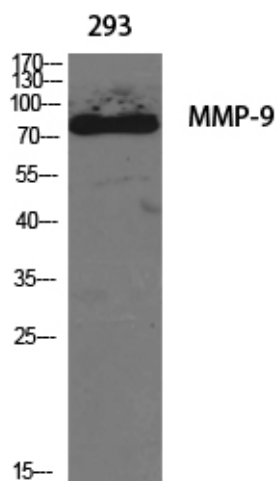


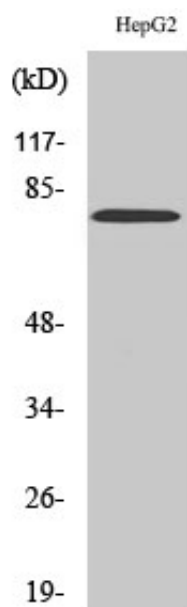
## MMP-9 Polyclonal Antibody

Catalog_no :	AT1892
Applications :	WB,IHC-p,IF,ELISA
Reactivity :	Human
Category :	抗原抗体
Size :	100µg/50µg/20µg
Gene_name :	MMP9
Protein_name :	Matrix metalloproteinase-9
Humangene_id :	<a href="#">4318</a>
Humanswissprot_no :	<a href="#">P14780</a>
Immunogen :	The antiserum was produced against synthesized peptide derived from human MMP-9. AA range:651-700
Specificity :	MMP-9 Polyclonal Antibody detects endogenous levels of MMP-9 protein.
Formulation :	Liquid in PBS containing 50% glycerol, 0.5% BSA and 0.02% sodium azide.
Source :	Rabbit
Dilution :	Western Blot: 1/500 - 1/2000. Immunohistochemistry: 1/100 - 1/300. Immunofluorescence: 1/200 - 1/1000. ELISA: 1/20000. Not yet tested in other applications.
Purification :	The antibody was affinity-purified from rabbit antiserum by affinity-chromatography using epitope-specific immunogen.
Concentration :	1 mg/ml
Storage_stability :	-20°C/1 year
Msds :	MSDS_Antibody.pdf
Other_name :	MMP9; CLG4B; Matrix metalloproteinase-9; MMP-9; 92 kDa gelatinase; 92 kDa type IV collagenase; Gelatinase B; GELB
Molecular Weight :	78KD

## Product Images



Western Blot analysis of various cells using MMP-9 Polyclonal Antibody diluted at 1 : 1000



Western Blot analysis of HepG2 cells using MMP-9 Polyclonal Antibody diluted at 1 : 1000