

## Ghrelin Polyclonal Antibody

Catalog_no :	AT1900
Applications :	WB,IHC-p,ELISA
Reactivity :	Human,Mouse,Rat
Category :	抗原抗体
Size :	100µg/50µg/20µg
Gene_name :	GHRL
Protein_name :	Appetite-regulating hormone
Humangene_id :	<a href="#">51738</a>
Humanswissprot_no :	<a href="#">Q9UBU3</a>
Mousegene_id :	<a href="#">58991</a>
Mouseswissprot_no :	<a href="#">Q9EQX0</a>
Ratgene_id :	<a href="#">59301</a>
Ratswissprot_no :	<a href="#">Q9QYH7</a>
Immunogen :	The antiserum was produced against synthesized peptide derived from human Ghrelin. AA range:47-96
Specificity :	Ghrelin Polyclonal Antibody detects endogenous levels of Ghrelin protein.
Formulation :	Liquid in PBS containing 50% glycerol, 0.5% BSA and 0.02% sodium azide.
Source :	Rabbit
Dilution :	Western Blot: 1/500 - 1/2000. Immunohistochemistry: 1/100 - 1/300. ELISA: 1/10000. Not yet tested in other applications.
Purification :	The antibody was affinity-purified from rabbit antiserum by affinity-chromatography using epitope-specific immunogen.
Concentration :	1 mg/ml
Storage_stability :	-20°C/1 year
Msds :	MSDS_Antibody.pdf



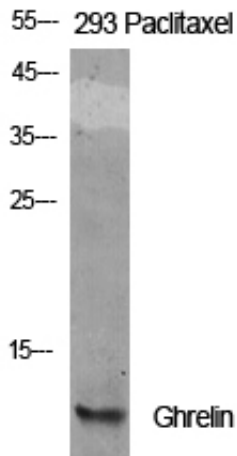
Other\_name : GHRL; MTLRP; Appetite-regulating hormone; Growth hormone secretagogue; Growth hormone-releasing peptide; Motilin-related peptide; Protein M46

---

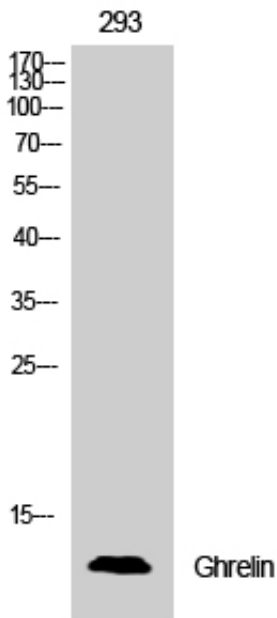
Molecular Weight : 13KD

---

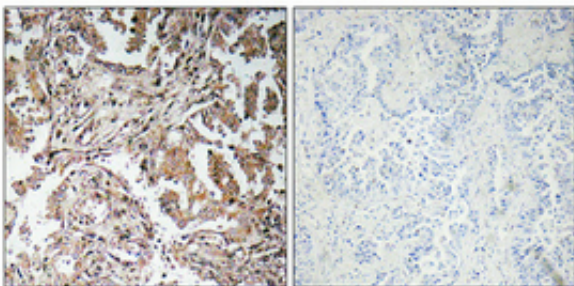
## Product Images



Western Blot analysis of various cells using Ghrelin Polyclonal Antibody



Western Blot analysis of 293 cells using Ghrelin Polyclonal Antibody



Immunohistochemical analysis of paraffin-embedded Human lung cancer. Antibody was diluted at 1:100(4°, overnight). High-pressure and temperature Tris-EDTA, pH8.0 was used for antigen retrieval. Negative control (right) obtained from antibody was pre-absorbed by immunogen peptide.