

GHRH-R Polyclonal Antibody

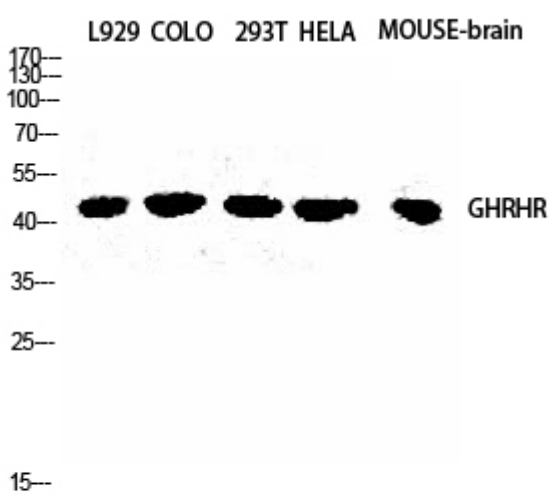
Catalog_no :	<u>AT1901</u>
Applications :	<u>WB,IF,ELISA</u>
Reactivity :	<u>Human,Mouse,Rat</u>
Category :	<u>抗原抗体</u>
Size :	<u>100µg/50µg/20µg</u>
Gene_name :	<u>GHRHR</u>
Protein_name :	<u>Growth hormone-releasing hormone receptor</u>
Humangene_id :	<u>2692</u>
Humanswissprot_no :	<u>Q02643</u>
Mousegene_id :	<u>14602</u>
Mouseswissprot_no :	<u>P32082</u>
Ratgene_id :	<u>25321</u>
Ratswissprot_no :	<u>Q02644</u>
Immunogen :	<u>The antiserum was produced against synthesized peptide derived from human GHRHR. AA range:351-400</u>
Specificity :	<u>GHRH-R Polyclonal Antibody detects endogenous levels of GHRH-R protein.</u>
Formulation :	<u>Liquid in PBS containing 50% glycerol, 0.5% BSA and 0.02% sodium azide.</u>
Source :	<u>Rabbit</u>
Dilution :	<u>Western Blot: 1/500 - 1/2000. Immunofluorescence: 1/200 - 1/1000. ELISA: 1/20000. Not yet tested in other applications.</u>
Purification :	<u>The antibody was affinity-purified from rabbit antiserum by affinity-chromatography using epitope-specific immunogen.</u>
Concentration :	<u>1 mg/ml</u>
Storage_stability :	<u>-20°C/1 year</u>
Msds :	<u>MSDS_Antibody.pdf</u>



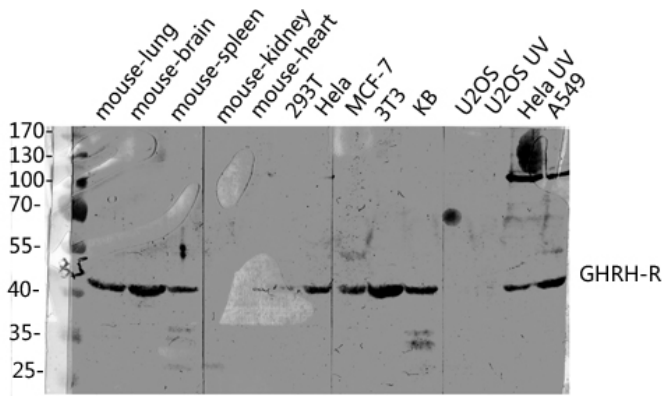
Other_name : GHRHR; Growth hormone-releasing hormone receptor; GHRH receptor; Growth hormone-releasing factor receptor; GRF receptor; GRFR

Molecular Weight : 47KD

Product Images



Western Blot analysis of L929 COLO 293T HELA MOUSE-brain cells using GHRH-R Polyclonal Antibody diluted at 1 : 2000



Western blot analysis of various lysis using GHRH-R Polyclonal Antibody diluted at 1 : 2000. Secondary antibody was diluted at 1:20000