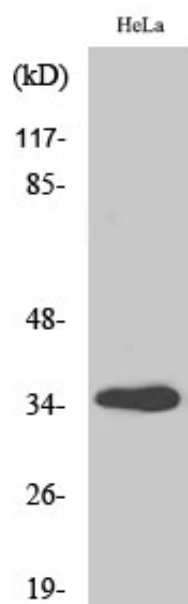


GIMAP5 Polyclonal Antibody

| | |
|---------------------|--|
| Catalog_no : | AT1905 |
| Applications : | WB,IHC-p,ELISA |
| Reactivity : | Human |
| Category : | 抗原抗体 |
| Size : | 100µg/50µg/20µg |
| Gene_name : | GIMAP5 |
| Protein_name : | GTPase IMAP family member 5 |
| Humangene_id : | 55340 |
| Humanswissprot_no : | Q96F15 |
| Immunogen : | The antiserum was produced against synthesized peptide derived from human GIMAP5. AA range:231-280 |
| Specificity : | GIMAP5 Polyclonal Antibody detects endogenous levels of GIMAP5 protein. |
| Formulation : | Liquid in PBS containing 50% glycerol, 0.5% BSA and 0.02% sodium azide. |
| Source : | Rabbit |
| Dilution : | Western Blot: 1/500 - 1/2000. Immunohistochemistry: 1/100 - 1/300. ELISA: 1/20000. Not yet tested in other applications. |
| Purification : | The antibody was affinity-purified from rabbit antiserum by affinity-chromatography using epitope-specific immunogen. |
| Concentration : | 1 mg/ml |
| Storage_stability : | -20°C/1 year |
| Msds : | MSDS_Antibody.pdf |
| Other_name : | GIMAP5; IAN4L1; IAN5; IMAP3; GTPase IMAP family member 5; Immunity-associated nucleotide 4-like 1 protein; Immunity-associated nucleotide 5 protein; IAN-5; hIAN5; Immunity-associated protein 3 |
| Molecular Weight : | 35KD |

Product Images



Western Blot analysis of various cells using GIMAP5 Polyclonal Antibody