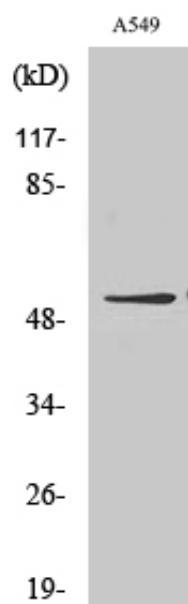




GIPR Polyclonal Antibody

Catalog_no :	AT1906
Applications :	WB,IHC-p,IF,ELISA
Reactivity :	Human
Category :	抗原抗体
Size :	100µg/50µg/20µg
Gene_name :	GIPR
Protein_name :	Gastric inhibitory polypeptide receptor
Humangene_id :	2696
Humanswissprot_no :	P48546
Immunogen :	The antiserum was produced against synthesized peptide derived from human GIPR. AA range:93-142
Specificity :	GIPR Polyclonal Antibody detects endogenous levels of GIPR protein.
Formulation :	Liquid in PBS containing 50% glycerol, 0.5% BSA and 0.02% sodium azide.
Source :	Rabbit
Dilution :	Western Blot: 1/500 - 1/2000. Immunohistochemistry: 1/100 - 1/300. Immunofluorescence: 1/200 - 1/1000. ELISA: 1/20000. Not yet tested in other applications.
Purification :	The antibody was affinity-purified from rabbit antiserum by affinity-chromatography using epitope-specific immunogen.
Concentration :	1 mg/ml
Storage_stability :	-20°C/1 year
Msds :	MSDS_Antibody.pdf
Other_name :	GIPR; Gastric inhibitory polypeptide receptor; GIP-R; Glucose-dependent insulintropic polypeptide receptor
Molecular Weight :	53KD

Product Images



Western Blot analysis of various cells using GIPR Polyclonal Antibody