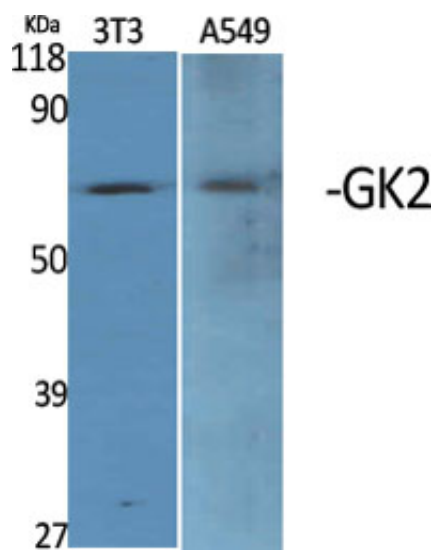


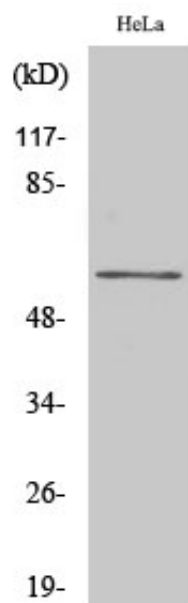
GK2 Polyclonal Antibody

Catalog_no :	AT1912
Applications :	WB,IHC-p,IF,ELISA
Reactivity :	Human
Category :	抗原抗体
Size :	100µg/50µg/20µg
Gene_name :	GK2
Protein_name :	Glycerol kinase 2
Humangene_id :	2712
Humanswissprot_no :	Q14410
Immunogen :	The antiserum was produced against synthesized peptide derived from human GK2. AA range:281-330
Specificity :	GK2 Polyclonal Antibody detects endogenous levels of GK2 protein.
Formulation :	Liquid in PBS containing 50% glycerol, 0.5% BSA and 0.02% sodium azide.
Source :	Rabbit
Dilution :	Western Blot: 1/500 - 1/2000. Immunohistochemistry: 1/100 - 1/300. Immunofluorescence: 1/200 - 1/1000. ELISA: 1/20000. Not yet tested in other applications.
Purification :	The antibody was affinity-purified from rabbit antiserum by affinity-chromatography using epitope-specific immunogen.
Concentration :	1 mg/ml
Storage_stability :	-20°C/1 year
Msds :	MSDS_Antibody.pdf
Other_name :	GK2; GKP2; GKTA; Glycerol kinase 2; GK 2; Glycerokinase 2; ATP:glycerol 3-phosphotransferase 2; Glycerol kinase; testis specific 2
Molecular Weight :	61KD

Product Images



Western Blot analysis of various cells using GK2 Polyclonal Antibody



Western Blot analysis of Jurkat cells using GK2 Polyclonal Antibody