

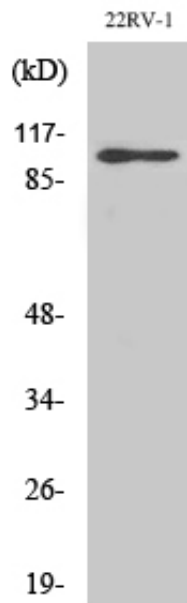
GluR-2 Polyclonal Antibody

Catalog_no :	AT1923
Applications :	WB,IHC-p,IF,ELISA
Reactivity :	Human,Mouse,Rat
Category :	抗原抗体
Size :	100µg/50µg/20µg
Gene_name :	GRIA2
Protein_name :	Glutamate receptor 2
Humangene_id :	2891
Humanswissprot_no :	P42262
Mousegene_id :	14800
Mouseswissprot_no :	P23819
Ratgene_id :	29627
Ratswissprot_no :	P19491
Immunogen :	The antiserum was produced against synthesized peptide derived from human GluR2. AA range:834-883
Specificity :	GluR-2 Polyclonal Antibody detects endogenous levels of GluR-2 protein.
Formulation :	Liquid in PBS containing 50% glycerol, 0.5% BSA and 0.02% sodium azide.
Source :	Rabbit
Dilution :	Western Blot: 1/500 - 1/2000. Immunohistochemistry: 1/100 - 1/300. Immunofluorescence: 1/200 - 1/1000. ELISA: 1/20000. Not yet tested in other applications.
Purification :	The antibody was affinity-purified from rabbit antiserum by affinity-chromatography using epitope-specific immunogen.
Concentration :	1 mg/ml
Storage_stability :	-20°C/1 year



MsdS :	<u>MSDS_Antibody.pdf</u>
Other_name :	<u>GRIA2; GLUR2; Glutamate receptor 2; GluR-2; AMPA-selective glutamate receptor 2; GluR-B; GluR-K2; Glutamate receptor ionotropic; AMPA 2; GluA2</u>
Molecular Weight :	<u>99KD</u>

Product Images



Western Blot analysis of various cells using GluR-2 Polyclonal Antibody