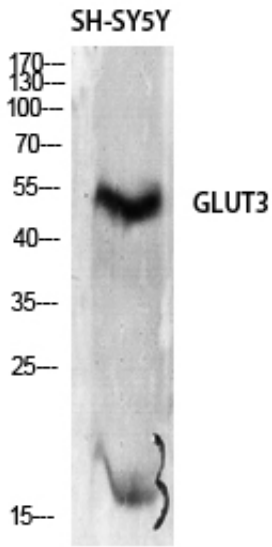




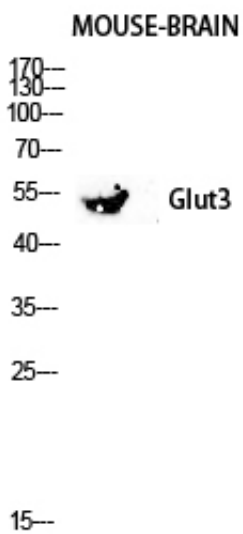
Glut3 Polyclonal Antibody

Catalog_no :	AT1929
Applications :	WB,IHC-p,ELISA
Reactivity :	Human
Category :	抗原抗体
Size :	100µg/50µg/20µg
Gene_name :	SLC2A3
Protein_name :	Solute carrier family 2 facilitated glucose transporter member 3
Humangene_id :	6515
Humanswissprot_no :	P11169
Immunogen :	The antiserum was produced against synthesized peptide derived from human GLUT3. AA range:447-496
Specificity :	Glut3 Polyclonal Antibody detects endogenous levels of Glut3 protein.
Formulation :	Liquid in PBS containing 50% glycerol, 0.5% BSA and 0.02% sodium azide.
Source :	Rabbit
Dilution :	Western Blot: 1/500 - 1/2000. Immunohistochemistry: 1/100 - 1/300. ELISA: 1/10000. Not yet tested in other applications.
Purification :	The antibody was affinity-purified from rabbit antiserum by affinity-chromatography using epitope-specific immunogen.
Concentration :	1 mg/ml
Storage_stability :	-20°C/1 year
Msds :	MSDS_Antibody.pdf
Other_name :	SLC2A3; GLUT3; Solute carrier family 2; facilitated glucose transporter member 3; Glucose transporter type 3, brain; GLUT-3
Molecular Weight :	55KD

Product Images



Western Blot analysis of SH-SY5Y cells using Glut3 Polyclonal Antibody diluted at 1 : 2000



Western blot analysis of Mouse-kidney lysis using Glut3 antibody. Antibody was diluted at 1:2000